

SAM HOUSTON



18

79

CITY

SAM HOUSTON STATE UNIVERSITY  
**COMMENCEMENT**

*A Member of The Texas State University System*



## Sam Houston State University Alma Mater

**Hail to Sam Houston,  
School we love best,  
Mighty in battle,  
True to the test.  
Bearkats so loyal,  
Ever we'll be.  
Orange and white will lead  
Us to victory!**

**Hail, Alma Mater  
Hats off to you,  
Ever you'll find us  
Loyal and true;  
Firm and undaunted,  
Ever we'll be,  
Here's to the school we love  
Here's a toast to thee.**

*(First verse by Allen R. Hightower III, sung at August 9, 2003  
commencement by composer: second verse, anonymous.)*



### BOARD OF REGENTS THE TEXAS STATE UNIVERSITY SYSTEM

Ron Blatchley, Chairman .....	Bryan/College Station
Charlie Amato, Vice Chairman .....	San Antonio
Kevin J. Lilly .....	Houston
Ron Mitchell .....	Horseshoe Bay
David Montagne.....	Beaumont
Trisha Pollard.....	Bellaire
Michael Truncale .....	Beaumont
Donna N. Williams.....	Arlington
Christopher Covo, Student Regent.....	San Marcos
Brian McCall, Chancellor .....	Austin

### CENTRAL ADMINISTRATIVE OFFICERS

Dana L. Gibson, Ph.D., CPA .....	President
David E. Payne, Ph.D. ....	Provost and Vice President for Academic Affairs
Randall Powell, Ph.D. ....	Interim Vice President for Finance and Operations
Frank R. Holmes, B.A. ....	Vice President for University Advancement
Heather V. Thielemann, Ed.D. ....	Vice President for Enrollment Management
Frank E. Parker, M.A. ....	Vice President for Student Services

### ACADEMIC ADMINISTRATIVE OFFICERS

David E. Payne, Ph.D. ....	Provost and Vice President for Academic Affairs
Jaimie L. Hebert, Ph.D. ....	Dean, College of Arts and Sciences
Mitchell J. Muehsam, Ph.D. ....	Dean, College of Business Administration
Vincent J. Webb, Ph.D.....	Dean, College of Criminal Justice
Genevieve H. Brown, Ed.D.....	Dean, College of Education
John M. de Castro, Ph.D. ....	Dean, College of Humanities and Social Sciences
Kandi A. Tayebi, Ph.D. ....	Dean of Graduate Studies and Associate Vice President for Academic Affairs
Richard F. Eglsaer, Ph.D. ....	Associate Provost

*Sam Houston State University is a Member of The Texas State University System*

### TABLE OF CONTENTS

Message from the President ....	1
Order of the Ceremony .....	2
Commencement Speakers .....	3
Guidelines for Guests .....	4
University Mace .....	5
Gonfalons .....	6
Academic Regalia .....	7
Baccalaureate Graduation with Special Recognition .....	8
Honor Graduates .....	9
Reflections of Sam Houston ...	10
College of Arts and Sciences.....	12
College of Business Administration .....	16
College of Criminal Justice.....	20
College of Education.....	24
College of Humanities and Social Sciences.....	28
Special Thanks.....	31
Office of Alumni Relations...	32



*Message from the President*

Dear Graduate:

We at Sam Houston State University are pleased and honored to share such a wonderful milestone with you today. Your degree represents a significant accomplishment in your life, and I congratulate you on the attainment of this goal.

When you first began your college career, I'm sure you had dreams of what you wanted to achieve. Your degree is tangible evidence of your success in making those dreams reality, and we are happy to have been a part of your education. We hope your association with us will continue, and as an alumnus you will feel the same pride for our university that you felt when you were here as a student.

Your graduation is the beginning of a new and exciting journey into a world filled with glorious opportunities. I urge you to keep alive your love for your alma mater and always remember you are a part of Sam Houston State University, a great name in Texas education.

Sincerely,

A handwritten signature in black ink that reads "Dana L. Gibson". The signature is written in a cursive, flowing style.

Dana L. Gibson



# SAM HOUSTON STATE UNIVERSITY COMMENCEMENT

Fall 2010

Bernard G. Johnson Coliseum

Friday, December 17, 2010	Saturday, December 18, 2010	Saturday, December 18, 2010
Evening Ceremony	Morning Ceremony	Afternoon Ceremony
6:00 p.m.	10:00 a.m.	2:00 p.m.
College of Business Administration	College of Arts and Sciences College of Humanities and Social Sciences	College of Criminal Justice College of Education

Presiding

David E. Payne, Provost and Vice President for Academic Affairs

## PROCESSIONAL

*Pomp & Circumstance*.....SHSU Brass and Percussion Ensemble  
Edward Elgar  
David Cole, Conductor  
Nicole Franklin, Song Leader

*The audience will stand for Posting of the Colors and remain standing respectfully until the ROTC Color Guard has exited the coliseum.*

Posting of the Colors.....SHSU ROTC Color Guard

*The Star-Spangled Banner*.....Nicole Franklin, Song Leader  
Text: Francis Scott Key; Music: John Stafford Smith

Introduction of the Speaker.....Dana L. Gibson  
President, Sam Houston State University

Commencement Address

Friday, December 17, 2010.....Bud Haney  
CME Emeritus President, Profiles International

Saturday, December 18, 2010.....Dan Branch  
Representative, State of Texas

*Alma Mater*.....Nicole Franklin, Song Leader  
Anonymous/Allen R. Hightower

Conferring of Degrees.....Dana L. Gibson

Remarks to the Graduates.....Ed G. Owens, Jr.  
President, Alumni Board of Directors

*Auld Lang Syne*.....Nicole Franklin, Song Leader  
Robert Burns

## RECESSIONAL

*Rondeau*.....SHSU Brass and Percussion Ensemble  
Jean-Joseph Mouret  
David Cole, Conductor

Audience seated for Processional and Recessional

*As a courtesy, please refrain from using noise makers during the graduation ceremony.*



A Member of  
The Texas State University System

***The Platform Party enters first; the faculty enter in the following order:***

*Friday, December 17, 2010  
Evening Ceremony*

- College of Business Administration, Department of Military Science, Newton Gresham Library.
- Dr. Leroy Ashorn is the Mace Bearer.
- Dr. William Green is the Gonfalon Bearer for the College of Business Administration.
- Dr. Edward Blackburne will introduce the graduates.

*Saturday, December 18, 2010  
Morning Ceremony*

- College of Arts and Sciences, College of Humanities and Social Sciences, Department of Military Science, Newton Gresham Library.
- Dr. James Tiller is the Mace Bearer.
- Dr. Nedom Muns is the Gonfalon Bearer for the College of Arts and Sciences.
- Dr. Jerry Bruce is the Gonfalon Bearer for the College of Humanities and Social Sciences.
- Ms. Penny Hasekoester will introduce the graduates.

*Saturday, December 18, 2010  
Afternoon Ceremony*

- College of Criminal Justice, College of Education, Department of Military Science, Newton Gresham Library.
- Dr. Sam Souryal is the Mace Bearer.
- Dr. Larry Hoover is the Gonfalon Bearer for the College of Criminal Justice.
- Dr. Sam Sullivan is the Gonfalon Bearer for the College of Education.
- Dr. Rick Bruhn will introduce the graduates.



**BUD HANEY, CME EMERITUS  
PRESIDENT, PROFILES  
INTERNATIONAL**

As co-founder and president of Profiles International, Bud Haney has been the driving force behind the overseas expansion of Profiles International. He was quick to recognize the potential for the company's products and services in emerging markets as well as in established ones.

Mr. Haney was awarded a baseball scholarship by Sam Houston State University where he earned a degree in accounting and was a four time All-American. Upon graduation, Mr. Haney signed a contract with the Kansas City Athletics. After his baseball career, he established a human resources development business of his own. His success led to an executive position with an international company, of which he rose to become its president.

In 2004, Mr. Haney was honored by his alma mater by being named to the Sam Houston State University Hall of Fame. The following year, he was named a Distinguished Alumnus by the SHSU board of directors

and Alumni Association. Mr. Haney has been honored by Sales & Marketing Executives International by being named to its Academy of Achievement Hall of Fame and has received SMEI's Pinnacle Award in recognition of his high achievements. He is also a recipient of the Certified Emeritus in Marketing from Sales and Marketing Executives International and is a Miller Heiman Strategic Sales certified trainer. Mr. Haney is a co-author of the best selling business guide *40 Strategies for Winning in Business*.



**DAN BRANCH  
REPRESENTATIVE, STATE OF  
TEXAS**

Rep. Dan Branch serves as a member of the Texas House of Representatives from Dallas (Dist. 108). Elected in 2002, as a Republican, he represents downtown, uptown and near east Dallas, as well as the Town

of Highland Park and the City of University Park.

Branch is Chairman of the Higher Education Committee and serves on the Judiciary & Civil Jurisprudence Committee, as well as the Legislative Budget Board. This session, Branch was selected by Texas House members from eleven north Texas counties to Co-Chair the Dallas Area Legislative Delegation (DALD). Last session, he served as Chairman of the House Select Committee on Higher & Public Education Finance. Additionally, he served three terms as the Chair of Budget & Oversight on House Public Education Committee, and last session, served as Vice Chair of the Appropriations Subcommittee on Education.

In 2009, Branch was named to Capitol Inside's "Best of the Texas Legislature" list for the sixth consecutive year and was the recipient of many public service awards, including the Dallas Morning News Legislative Leader Board, the Texas Medical Association Medical Student Division's "2007 Legislator of the Year," the United States Humane Society Humane State Legislator Award; and, over the years, multiple "Champion of Free Enterprise" awards from the Texas Association of Business.

This session, Rep. Branch led the successful efforts to develop more Tier One universities in Texas, reform the Top 10% college admissions law, limit cell phone use in active school zones and provide more interactive technology in public school classrooms.

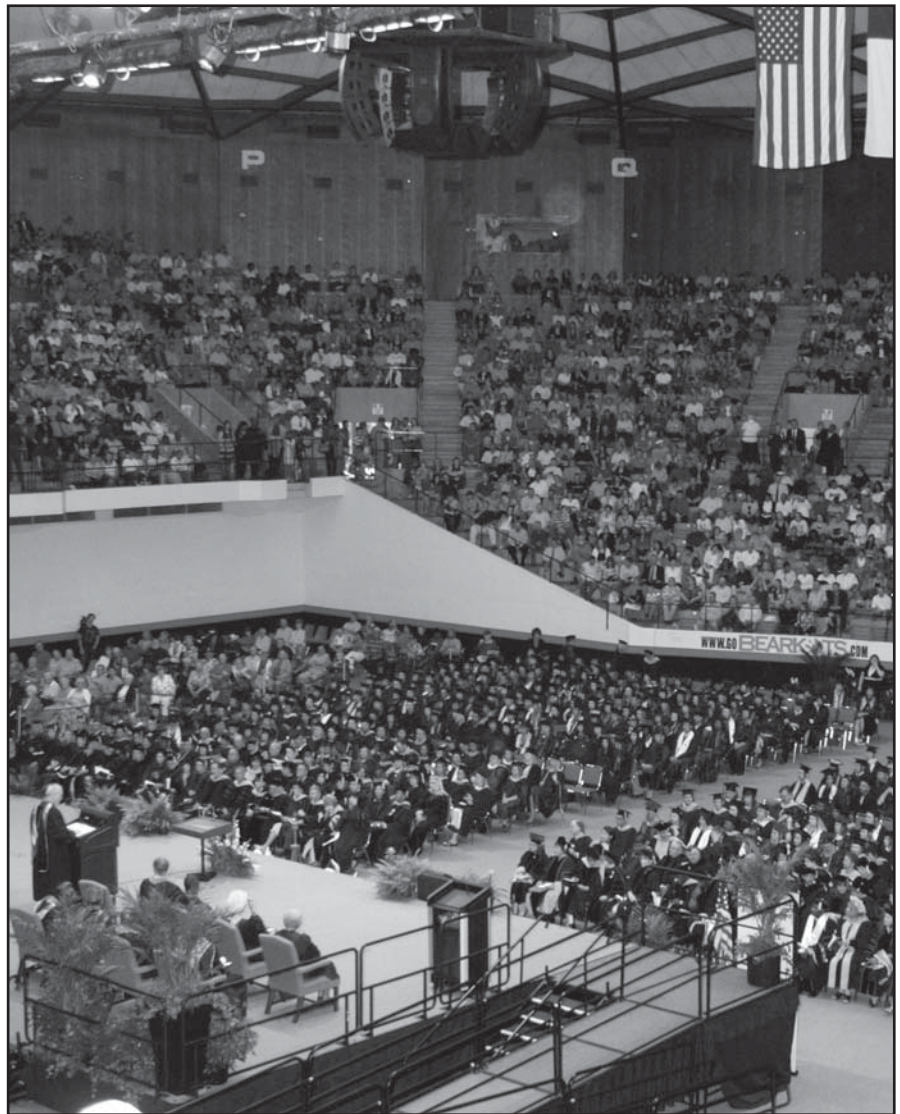
In addition to his service in the Legislature, Branch is a corporate lawyer and shareholder of Winstead PC. He is a former judicial clerk to Texas Supreme Court Chief Justice Jack Pope and a former aide to

the late U.S. Senator John Tower. Branch is a member of the bars of Texas, New York and the District of Columbia.

Beyond his professional service, Branch is a member of the Council on Foreign Relations in New York City, a former president of The Dallas Assembly and a former Chairman of the Texas Public Finance Authority, appointed by Governor George W. Bush. Branch is a Fellow of the Aspen Institute's Rodel program, Class of 2008. In addition, he is the chairman of SMU's John Tower Center for Political Studies, and serves on numerous boards, including The Fund for American Studies in Washington, D.C., the Boy Scouts of America/Circle Ten Council and the Southwestern Medical Foundation in Dallas.

A graduate of the SMU School of Law and the Institute on Comparative Political & Economic Systems at Georgetown University, he holds two undergraduate degrees from Oklahoma Christian University, graduating summa cum laude in 1980.

Dan and his wife, Stacey, live in Dallas along with their five children.



---

### *Guidelines for Guests*

---

Commencement is a significant and solemn event, the recognition of years of study. To make it more meaningful to all guests, participants are requested to avoid all unnecessary conversation and movement during the exercises.

Only the official photographer is allowed on the floor by the stage. After the graduate has crossed, guests may take pictures in the holding area adjacent to the stage.

Candidates will cross the stage as listed in the program.

The audience is asked to remain seated for processional and recessional.

As a courtesy, please refrain from using noise makers during the graduation ceremony.

---

## *University Mace*

---

The University Mace is symbolic of the authority of the Board of Regents, The Texas State University System, and the Office of the President of Sam Houston State University. The mace, used in academic convocations, is carried by the senior tenured faculty member of the University. The initial use of the University Mace at Sam Houston State University was on the occasion of the summer commencement on August 20, 1988.

The walnut staff is bound in brass and has a hexagonal head with inlays of pecan denoting the state tree and recessed brass medallions cast with designs for General Sam Houston, Austin Hall, Old Main, Bearkats, and the completion date of the mace. The walnut holder base or stall is six-sided to match the mace head.

The crown of the mace is a circular casting bearing the name of the University and the date of establishment, 1879. The center of the circle contains the state emblem, the lone star. Below the crown, the names of past University presidents and the dates of service are engraved on a brass collar.

The University Mace was designed and hand crafted by the late Charles R. Jedlicka, Associate Professor of Industrial Technology, who retired in 1989.



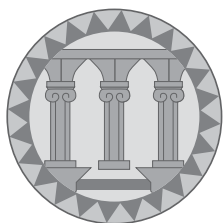
---

## *Gonfalons*

---

The gonfalon, a flag that hangs from a crosspiece or frame, originated in the medieval republics of Italy as an ensign of state or office. Gonfalons have been adopted in many universities around the world as college or institutional insignias.

The five gonfalons displayed represent the five colleges of Sam Houston State University. The initial use of gonfalons at Sam Houston State University was on the occasion of the spring commencement on May 7, 1988.



### *College of Arts and Sciences*

The three columns represent the concept of civilization based on a knowledge of the sciences, humanities, and arts. The purple triangles around the edge represent the disciplines taught in the College of Arts and Sciences. The stepped levels represent the bachelor and master's degree programs offered by the College of Arts and Sciences.



### *College of Business Administration*

The inner circle represents the world economy and the development of international trade and exchange. Surrounding the world of business are symbols representing commerce, technology, telecommunications, capital formation, and economic development. The beige background is the discipline color for business administration.



### *College of Criminal Justice*

The seal of the College of Criminal Justice includes a scale encircled by an oak bough and an olive branch. The scale represents the spirit of the Latin proverb, *Jus est ars boni et aequi*, Justice the art of the good and fair. The oak bough with 16 leaves symbolizes strength while the olive branch with 20 leaves represents peace. The number of leaves recalls the year, 1620, when the pilgrims signed the Mayflower Compact, the first American political document, whose purpose was to preserve order by means of the principle of rule of law.



### *College of Education*

The sage green represents the Department of Health and Kinesiology. The royal blue at the bottom represents the Ph.D. degree. The light blue at the top signifies the Ed.D. degree, and is the hood color for education in general. The yellow represents Library Science. In general, the departments in the College of Education are represented by the open book and the lamp of knowledge, which embody the value of literacy and education.



### *College of Humanities and Social Sciences*

The College of Humanities and Social Sciences' gonfalon symbolizes the human social experience. The scroll represents a life informed by learning and shaped by the written word across time. On the scroll is a globe representing the study of human societies, cultures, and behaviors. Inside the globe, the quill connotes the importance of creative endeavors to human existence while the ruler along the rooftops illustrates a concern with the scientific method. The arched lines represent communication and its wide-reaching effects, hovering over the home, which emphasizes the importance of human bonds and of the family's formative role for the individual. Overlooking all of the other symbols are four face profiles representing the celebration of the diversity that strengthens each of the disciplines within the college.



---

## *Academic Regalia*

---

The academic costume worn at official functions today originated in the universities of the Middle Ages, when a warm gown and hood were useful for scholar and cleric in unheated buildings. By modern times, the growth in the number of universities caused a great deal of confusion in academic regalia and in 1894-95, a commission brought some order into the chaos. The American Council on Education subsequently effected more improvements in 1959-60.

The mortarboard cap, which generally prevails in the United States, originated at Oxford. Cambridge, European universities, and some Latin American universities use other types of caps, which are of course legitimate for wear in any American procession when the individual holds his degree from one of these institutions.

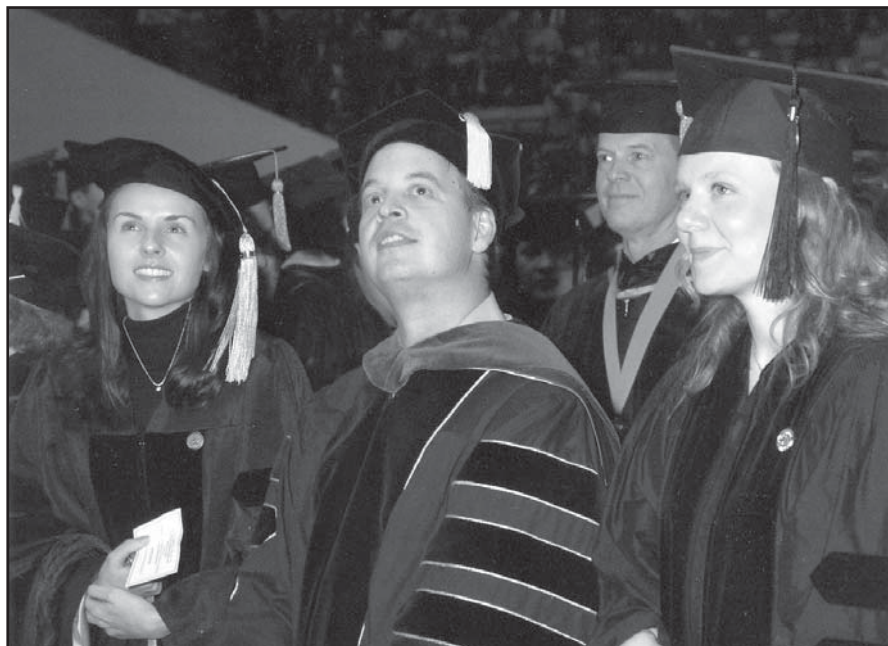
Gowns are generally black, although some few universities depart from this practice. The bachelor's gown

is simple, with long pointed sleeves. The master's gown will have either long sleeves with narrow wrist opening or long sleeves with the hand emerging from the sleeve at about elbow length. The doctor's gown is fullest in cut; it has velvet panels down the front and around the neck, as well as three bars of the same material on the bell-shaped sleeves.

The hood indicates the level of the degree, the faculty in which it was given and the institution that granted it. Degree level is indicated by length: the master's hood is three and a half feet long and the doctor's hood is four feet long. The velvet trim on the exposed edge of the hood is three inches wide for the master's degree and five inches wide for the doctor's degree. The color of the trim indicates the field of study. A color, or color pattern, between the trim indicates the university granting the degree.

Hood trim colors on doctoral regalia indicate the following fields:

Maize—Agriculture  
White—Arts, Letters, Humanities  
Drab—Commerce, Accountancy, Business  
Lilac—Dentistry  
Copper—Economics  
Light Blue—Education  
Orange—Engineering  
Brown—Fine Arts, including Architecture  
Russet—Forestry  
Crimson—Journalism  
Purple—Law  
Lemon—Library Science  
Green—Medicine  
Pink—Music  
Apricot—Nursing  
Sea Foam Green—Optometry  
Silver Gray—Oratory (Speech)  
Olive Green—Pharmacy  
Blue—Philosophy  
Sage Green—Physical Education  
Peacock Blue—Public Administration and Foreign Service  
Salmon Pink—Public Health  
Golden Yellow—Science  
Cream—Social Science  
Citron—Social Work  
Scarlet—Theology  
Gray—Veterinary Science





*First Faculty and Student Body of Sam Houston in 1880.*

---

## *Baccalaureate Graduation with Special Recognition*

---

Special recognition at graduation is provided to undergraduate students who compile outstanding academic records. Those graduates who have achieved undergraduate academic excellence at Sam Houston State University receive a gold cord at graduation to reflect this achievement plus an appropriate notation on their academic transcript. The gold cord indicates one of the following academic achievements: Summa Cum Laude, Magna Cum Laude, Cum Laude, With Academic Distinction, Alpha Chi, and Honors Program. (See NOTE below.)

Degrees conferred Cum Laude, Magna Cum Laude, and Summa Cum Laude reflect an outstanding Sam Houston State University grade point average with a minimum of sixty semester hours earned in residence (resident classroom instruction). The distinction and corresponding grade point averages are: Cum Laude—3.50 to 3.66; Magna Cum Laude—3.67 to 3.85; Summa Cum Laude—3.86 to 4.00.

The Department Academic Distinction Program is an individualized learning experience available to outstanding students at Sam Houston State University.

An Academic Distinction Program project provides qualified students with a comprehensive introduction to meaningful research under the guidance of a designated faculty advisor.

Alpha Chi, a national honor society organized to recognize and promote scholastic excellence, is open to all University seniors who accepted membership and have achieved a 3.6 or higher grade point average on all college-level course work.

Participation in the Honors College at Sam Houston State University is based on a competitive selection process and provides outstanding academic opportunities and distinct undergraduate college experiences. Upon successful completion of the requirements of the Honors College—twenty-four semester hours of Honors courses and two special seminars—the student's academic transcript will indicate graduation "With Honors" and the student may wear an Honors medallion with academic regalia. To be designated as having graduated "With Highest Honors" the student must also successfully complete a special senior project involving original research and/or an effort of creative expression.

*NOTE: Semester credit hours earned in correspondence courses are not considered "resident classroom instruction" hours and are not used in determining the minimum semester credit hour requirement for academic honors: Cum Laude, Magna Cum Laude, Summa Cum Laude, Dean's List, and President's Honor Roll. However, the semester credit hours and grade points earned for correspondence courses are included in the calculation of the overall grade point average.*

---

## *Honor Graduates*

---

**Numerals Denote Academic Honors as of the 12th Class Day of Fall 2010:**

**1, 2, 3 = Cum Laude, Magna Cum Laude, Summa Cum Laude**

**4, 5 = Honors/Honors Program, With Highest Honors in an Academic Discipline/Honors Program**

**6 = With Academic Distinction in an Academic Discipline**

Maegan Louise Admire<sup>1</sup>  
Ashley Nichole Ahart<sup>3,4</sup>  
Nicholas James Alaggio<sup>1</sup>  
Anna Elisabeth Bailey<sup>2</sup>  
Whitney Elise Barefield<sup>1</sup>  
Amanda Nicole Baske<sup>1</sup>  
Nancy J. Baxter-Gray<sup>2</sup>  
Kevin Michael Bowden<sup>3,4</sup>  
Troy Dillon Bradshaw<sup>2</sup>  
Blaire Ruth Brown<sup>2</sup>  
Charles M. Bryant<sup>2</sup>  
Christopher Mazrolle Burgess<sup>3,4</sup>  
Garrett Hall Calpouzos<sup>2,4</sup>  
Laura Elizabeth Cameron<sup>3</sup>  
Debbie Marie Campbell<sup>2</sup>  
Carolyn Agnes Carroll<sup>2</sup>  
Scott David Clark<sup>3</sup>  
Shirley-Anne Regnier Classen<sup>3</sup>  
Daniel William Cloud<sup>1</sup>  
Joshua Michael Cole<sup>1</sup>  
Clifford Cody Coquel<sup>1</sup>  
Kimberly Michelle Courville<sup>1</sup>  
Michelle Lee Daugherty<sup>1,4</sup>  
Georgia Andrea Davila<sup>2</sup>  
Jennifer Lyn Day<sup>1</sup>  
Mayra DeLeon<sup>1</sup>  
Katherinne Mishelle Diaz<sup>1</sup>  
Sarah Grace Dougherty<sup>2</sup>  
Amanda Danielle Durrett<sup>1</sup>  
Christian Stephen Evans<sup>1</sup>  
Lauren R. Evans<sup>3</sup>  
Cristin J. Farr<sup>1</sup>  
Joshua D. Fay<sup>1</sup>  
Elly Felson<sup>2</sup>  
Lisa Ann Ferree<sup>1</sup>  
Leann Claire Fischel<sup>2,5</sup>  
Sarah Elizabeth Galeucia<sup>3</sup>  
Catherine Nicole Gary<sup>2</sup>  
Irma Yvette Garza<sup>2</sup>  
Kaylan Renee Gaynor<sup>3</sup>  
Michael Dewayne Gesford<sup>2</sup>  
Lacey Elizabeth Gilmore<sup>1</sup>  
Alma Elisa Gonzalez<sup>2</sup>  
Natalie Yvonne Gonzalez<sup>1</sup>  
Rachel Louise Greene<sup>2,4</sup>  
Emmadonna M. Griffin<sup>2</sup>  
Lindsay Nicole Griffith<sup>2</sup>  
Tiffany Marie Gunn<sup>2</sup>  
Johanna Kay Hamilton<sup>3</sup>  
Kyle Patrick Hardin<sup>3</sup>  
Kaleigh Elizabeth Hein<sup>2</sup>  
Jennifer Lynn Henson<sup>2</sup>  
Angelica Hernandez<sup>2</sup>  
Hayley Adair Hinson<sup>2</sup>  
Julie Ann Hinton<sup>2</sup>  
Ngoc-Anh Thuy Ho<sup>2,4</sup>  
Hannah Jennifer Hohl<sup>1</sup>  
Rachel Louise Hornung<sup>2</sup>  
Heather Jo Hoyland<sup>1</sup>  
Jessica Ann Huettel<sup>3</sup>  
Monica Claire Hutton<sup>1,4</sup>  
Ashley Nicole Jeter<sup>3,4</sup>  
Melanie Ann Kalisek<sup>3</sup>  
Jennifer Lynne Kane<sup>1</sup>  
Naomi Grace Keller<sup>1</sup>  
Jeana Sue Kendrick<sup>3</sup>  
Michael J. King<sup>1</sup>  
Kerri Anne Kiser<sup>3,4</sup>  
Crystal Lynn Knighton<sup>1</sup>  
Laura Ann Knott<sup>3</sup>  
Keilan Douglas Kyle<sup>1</sup>  
Suzanne Marie Lakas<sup>2</sup>  
Colton Ryan Langridge<sup>1</sup>  
Nicole Crystin Larison<sup>5</sup>  
Brian Carey Lewis<sup>3</sup>  
Shannon R. Lewis<sup>1</sup>  
Christina Marie Lipinsky<sup>4</sup>  
Biswas Lohani<sup>1</sup>  
Carly Ann Loomis<sup>1</sup>  
Kymberly Joy Loving<sup>1</sup>  
Michelle Lucio<sup>1</sup>  
Jessika Maribel Marcos<sup>1</sup>  
Sarah Lynn Marshall<sup>2,4</sup>  
Alondra Martinez<sup>2</sup>  
Emily Elise Martinez<sup>3</sup>  
Brittany Danielle McClure<sup>2</sup>  
Tiffany Lynn McClure<sup>1</sup>  
Steven Andrew McCoy<sup>1</sup>  
Faith Rochelle Meek<sup>1</sup>  
Karen Sarai Mendoza<sup>1</sup>  
Michelle Yvonne Mullan<sup>3</sup>  
Aurora Munoz<sup>1</sup>  
Christopher David Nelson<sup>1</sup>  
Seth Colton Newsome<sup>2</sup>  
Joe Westley Nidever<sup>2</sup>  
Jeffrey Cummings Norcross<sup>1</sup>  
Heather Nicole Olguin<sup>3,4</sup>  
Julie Ann Oliver<sup>1</sup>  
Daniel Jared Owens<sup>1</sup>  
Marilyn M. Paige<sup>1</sup>  
Danielle Kristina Pascoe<sup>1</sup>  
Brian Joseph Pavlock<sup>2</sup>  
Alyssa Ann Payne<sup>2</sup>  
Jacqueline Guadalupe Pelayo Iniguez<sup>2</sup>  
Charlotte Renée Pennington<sup>1</sup>  
Patrick Matthew Pettibon<sup>4</sup>  
Jennifer Michele Pidotella<sup>1</sup>  
Amy Lee Pierce<sup>2,4</sup>  
Amy Christine Potter<sup>2</sup>  
Karissia Rena Qualls<sup>2</sup>  
Lee Anthony Rivera<sup>1</sup>  
Melondy O'Shea Roberson<sup>1</sup>  
Nicole Elizabeth Roberts<sup>1</sup>  
Anna Elena Rodriguez<sup>1</sup>  
Sarah Anne Romanowski<sup>1</sup>  
Sarah Virdell Ross<sup>2</sup>  
Dawnell Michel Rush<sup>1</sup>  
Katy Marie Ryan<sup>1</sup>  
Kemberli Michelle Sargent<sup>2</sup>  
Jessica Christine Schenck<sup>1</sup>  
Tracy Kittell Schultz<sup>3</sup>  
Crystal Aileen Scott<sup>1</sup>  
Brandy Rachelle Thomas Shannon<sup>3</sup>  
Cassidy Diann Sharp<sup>2</sup>  
David Lee Sheffield II<sup>1</sup>  
Ashli Brooke Shreve<sup>2</sup>  
Nicole Marie Simmons<sup>3</sup>  
Brandon Donovan Snyder<sup>3</sup>  
Steffen Roshawn Sowell<sup>4</sup>  
Sherry Leslie Soundy<sup>2</sup>  
Joshua Bill Stone<sup>2</sup>  
Christopher Thomas Stout<sup>1</sup>  
Nathan Scott Suderman<sup>1</sup>  
Katherine Marie Taylor<sup>2</sup>  
Joanne Theresa Testa<sup>3</sup>  
Stephanie M. Tracy<sup>2,4</sup>  
Aaron Mathew Tullar<sup>1</sup>  
Madison Elizabeth Turner<sup>1</sup>  
Sharon Yvette Vasquez<sup>1</sup>  
Christine Elizabeth Vinal<sup>1</sup>  
Charles Fredrick Vogel II<sup>3</sup>  
Brittany Lorree Waguespack<sup>2,4</sup>  
Chase Hanson Walker<sup>3</sup>  
Lynnet Marie Wehman<sup>1</sup>  
Jennifer Louise Wesley<sup>1</sup>  
Brandon Perry White<sup>2</sup>  
April Lee Wikstrom<sup>2</sup>  
Sarah Robin Wiley<sup>2</sup>  
Andrew Francis Williams<sup>2</sup>  
Mallory Beth Wilson<sup>1,4</sup>  
Sarah Brooke Winchester<sup>2</sup>  
Dongfang Xiao<sup>2</sup>

## Reflections of Sam Houston

Although Texas escaped much of the destruction wreaked on the rest of the Confederacy during the Civil War, its public school system remained badly underdeveloped, and education reformers expressed anxiety about illiteracy rates among former slaves as well as among poor whites. In 1878-1879, with the political tumult of Reconstruction subsiding, a representative of the Peabody Education Fund visited Texas hoping to convince the state legislature to establish a public institution to train school teachers. George Peabody, a wealthy cotton broker and banker, had endowed the philanthropy with money and a mission to “encourage the intellectual, moral, and industrial education of the destitute children of the Southern States.” The fund offered to help subsidize a state-controlled teacher training institution, and in 1879, the state legislature acted upon the suggestion, establishing in Walker County the Sam Houston Normal Institute, named after Sam Houston, the hero of the Battle of San Jacinto and first president of the Republic of Texas, who had called Huntsville his home. The institute moved into buildings abandoned by Austin College, which had relocated to Sherman, Texas, three years earlier.

The state legislature offered free tuition, laundry, room, and board to select students willing to become public school teachers after graduation. They promised to teach one year for each year of assistance received. Under the direction of Principal Bernard Mellon, who reported to the state board of education, the Sam Houston Normal Institute opened on October 10, 1879, with a curriculum composed of professional and pedagogy courses.



*Old Main building in 1895.*

Students were admitted on the basis of competitive examinations and hailed from each senatorial district in the state. The first commencement of May 1880 included thirty-seven graduates followed by fifty-five graduates in 1881. Enrollment continued to increase steadily and in 1923 reached a total of 1,089 students taught by fifty-six faculty members.

Consistent with educational values emerging in the United States during the Progressive Era, the Sam Houston curriculum expanded in 1909 beyond teacher education to include home economics, industrial training, and vocational agriculture. In 1911, the state legislature established a board of regents to govern the Sam Houston Normal Institute and authorized a four-year curriculum leading to a Bachelor of Arts degree. The first B.A. degree was conferred in 1919. Taking into account the more diverse curriculum and broader role and scope, the board of regents in

1923 christened the institution Sam Houston State Teacher’s College, although at the time none of the faculty had earned the Ph.D. degree. During the next five years, President H. F. Estill hired four new faculty members with doctoral degrees.

In 1935, Sam Houston further transcended its teacher training mission. The board of regents had authorized bachelor’s degrees in business administration, and the first graduates received diplomas in the spring of 1937. The bicentennial of Texas independence in 1936 had also occasioned establishment of the Sam Houston Memorial Museum as an affiliate of Sam Houston State Teacher’s College, and the board of regents had authorized a graduate program, which produced three Master of Arts degrees in 1937. Sam Houston’s president, Charles N. Shaver, then decided that the curriculum also needed to be expanded to accommodate the needs of students interested in



pursuing postgraduate training in law, dentistry, and medicine, and in 1938-1939, he added advanced undergraduate courses in biology, chemistry, physics, English, government, and history. In the fall of 1938, Sam Houston enrolled 1,112 students.

Enrollment took a hit in 1942, however, when World War II drew so many young men and women into the military and defense industries. In the fall semester of 1942, less than a year after the bombing of Pearl Harbor, total student enrollment at Sam Houston had plunged to 786 students. Following the war's conclusion Congress passed the G.I. Bill in 1946, making it financially easier for veterans to enroll in college. As a result student numbers climbed and Sam Houston enrolled more than 1,100 students that year.

Worried about housing so many new students, Sam Houston acquired 837 acres of land formerly used as a prisoner-of-war camp for German POWs. "Country Campus," as it became known, was located about ten miles north of Huntsville on Highway 19. Two years later, enrollment reached 2,410 students, of whom more than 1,000 were veterans. The faculty consisted of fifty men and women.

In 1950, Harmon Lowman, who had been Sam Houston's president since 1946, negotiated a deal to acquire a used, 1,075-ton refrigeration system. Installation of the unit and construction of the duct work necessary to make it operational consumed several years, but the project's completion rendered Sam Houston the first and only fully air-conditioned college in the United States. Summer school enrollment immediately increased, however, the outbreak of the Korean War in 1950 slowed enrollment once again, and in 1952,

Sam Houston began to sponsor a Reserve Officer Training Corps (ROTC) unit. Because ROTC was mandatory, more than half of all male students were active in the program, which helped set the tone for campus social life. The broadening of Sam Houston's mission also produced changes in the profile of college graduates. In 1960, more than one quarter of Sam Houston students majored in fields other than teacher education.

In 1964-1965, Sam Houston State Teacher's College experienced three changes that would significantly reshape its future reputation. President Arleigh Templeton, who had succeeded Harmon Lowman in 1964, added research to faculty responsibilities; 259 people now had the charge to teaching and to produce new knowledge. Additionally, in response to the Civil Rights Act of 1964, Sam Houston ended its eighty-three year-old policy of denying admission to African Americans. John Patrick, valedictorian of Huntsville's Sam Houston High School, subsequently matriculated as Sam Houston's first African-American student. Furthermore, the state legislature established on campus the Institute of Contemporary Corrections and Behavioral Sciences, whose criminal justice program was destined to generate national recognition. Enrollment in 1964 reached 5,738 students, and Sam Houston no longer served the monolithic mission of teacher education. Because the college offered nine degrees in twenty-seven subject areas, including four graduate degrees, the legislature designated it Sam Houston State College. In 1969, when enrollment reached 8,594, with 350 faculty members, the state legislature acted again, and Sam Houston State College became Sam Houston State University.

During the next four decades, under the leadership of Presidents Elliot T. Bowers, Martin J. Anisman, Bobby K. Marks, and James F. Gaertner, Sam Houston State University continued to grow—in size, mission, and reputation. By the fall of 2010, when Dr. Dana Gibson inherited the mantle of the president's office, the university offered to its 17,200 plus students a total of seventy-nine undergraduate degree programs, fifty-four master's degree programs, and doctoral programs in Criminal Justice, Educational Leadership, Counselor Education, Clinical Psychology, and Reading. The university had become, in the words of CBS News anchor Dan Rather, its most well-known alumnus, a gem in Texas higher education.

"For all the changes, for all the expansion of infrastructure, mission, and educational ambition," Rather said, "people have been Sam Houston's constant. The names and faces change, but the spirit they have brought to and taken away from Huntsville, Texas remains the same. People are Sam Houston's strength, and so long as that is true, the college I knew and that today's students know will be, in the ways that matter most, one and the same."



1919 Student Army Training Corp.

# COLLEGE OF ARTS AND SCIENCES

*Dr. Jaimie L. Hebert, Dean*

On behalf of the faculty of the College of Arts and Sciences, I want to extend our congratulations to you on this significant accomplishment.

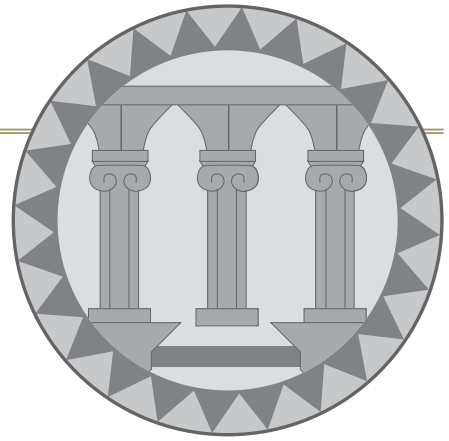
Our college embraces the traditional aims of a liberal arts education: a critical understanding of diverse cultures as expressed in their art, ideas and values. We strive to foster analytic, interpretive, creative, and interpersonal abilities, as well as communication skills that are fundamental to functioning effectively in the University and in the larger community. By successfully completing your course of study, you have demonstrated respect and understanding for these basic tenets. We are very proud of your success and ours!

The educational foundation that you developed while a student at Sam Houston provides you with the ability to develop, evaluate, and express ideas critically. It is my sincere hope that you embrace lifelong learning and continue to build upon that foundation.

Sam Houston is a great name in Texas education, and I am certain that you will represent our University well through the successes in your life.



Dr. Jaimie L. Hebert, Dean



## *Master Degree Candidates*

Jeffrey Jack Alley, MS  
Kimberly Nicole Choate, MS  
Chad Allen Cook, MS  
Karrie Marie Everett, MS  
Hugh Emory Gardenier III, MS  
Martha Leonard Gardenier, MS  
Valasta Michelle Jones, MS  
Revathi Kanna, MS  
Melissa Christine Keck, MS  
Deepthi Mandava, MS  
Kothandaram Sandeep Naidu, MS  
Brian Jacob Olian, MM  
Hongqiang Qian, MS  
Clifford R. Rice, MS  
Michael C. Ritenour, MS  
Kishore Shimikeri, MS  
Ragini Singh, MS  
Debra Mitchell Vandergriff, MM  
Russell Craig Yancy, MS



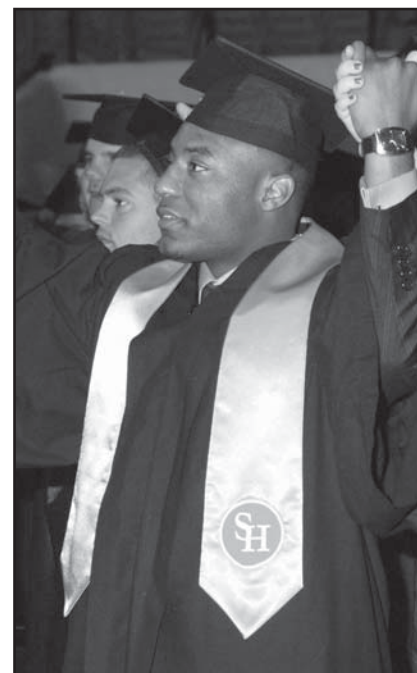
*The Peabody Memorial Library (current day) was the first library built at a Texas higher education institution.*

## Bachelor Degree Candidates

Wade Allen Abadie, BS  
Ashraf Abdalla, BS  
David Trey Abney, BS  
Nigel Francis Acosta, BFA  
Dustin Wayne Adams, BA  
Kevin Ray Adams, BS  
Ashley Nichole Ahart, BS  
Nicholas James Alaggio, BM  
Jessica Taylor Allen, BS  
Emily Denise Amenta, BS  
Miranda Carrie Amman, BA  
Charolette Elaine Atkinson, BS  
Jonathan Alex Badour, BM  
Blake Gregory Baker, BS  
Jerre Paul Barron Jr., BAAS  
Kyle Anthony Bean, BS  
Jamie Lee Benjamin, BS  
Candice Marie Bennett, BA  
Richard Joseph Bledsoe, BA  
Alexander Murray Bliss, BFA  
Christopher Bailey Bower, BS  
Rachel Lauren Brandt, BS  
Elizabeth Ann Buehring, BA  
Jamie Lee Burke, BS  
Charisa Dawn Cain, BS  
Christina Aurelia Calixtro, BS  
Lloyd Carleton Callahan III, BS  
Ryan Scott Carmichael, BFA  
Cristina Araceli Castillo, BS  
Scott Edward Caudle, BS  
Bradley Joseph Chachere, BS  
Yamin Aziz Chowdhury, BS  
Joshua Michael Cole, BS  
Christopher Burton Comer, BS  
Darla Rae Conciencie, BS  
Clifford Cody Coquel, BS  
Candice Lea Cox, BS  
Ryan L. Cunningham, BA  
Dylan Damian, BS  
Curtis Brandon David, BS  
Anthony Scott Davis, BS  
David Wayne Delesandri Jr., BS  
Katherinne Mishelle Diaz, BFA  
Kyle Ryan Dittfurth, BS  
Jared Brandon Doster, BS  
Allyson Rene Duval-Slothouwer, BFA  
Amanda M. Ernst, BM  
Vanetta Rae Ester, BM  
Cody Andrew Evans, BS

Lauren R. Evans, BS  
Lauren Rochelle Feehery, BFA  
Ethan Caleb Ferrell, BS  
Rachel Elizabeth Gabriel, BS  
Jessica Maurie Gainey, BS  
Brittany Elise Gill, BS  
Tiffany Nicole Goebel, BS  
Celeste Rose Gonzalez, BA  
Jason Paul Gordy, BFA  
Larry Dale Gough Jr., BS  
Jennifer Lauren Grainger, BFA  
Sue Ellen Gramajo, BA  
Robert Garrett Griffin, BS  
Kara Iluminada Grimm, BA  
William Travis Guthrie, BS  
Kylie Brooke Hale, BS  
Joe Ross Hallonquist, BS  
Donald Rit Hanley, BS  
Haley Carlisle Hanson, BS  
Madison Brooks Hausinger, BS  
Jeni Ann Hawk, BS  
Heresia Trencece Hayes, BFA  
Lisa Katherine Henderson, BS  
Jessica Marie Herrmann, BS  
Sharen Leigh Hickman, BS  
Andira Shiron Hight, BS  
Samantha Lyn Hilker, BS  
Jacob W. Hill, BS  
Roger William Hill, BS  
Julie Ann Hinton, BS  
Heather Renee Hitchcock, BS  
Mitchell Louis Hoatson, BS  
Ashley Michelle Hobbs, BAAS  
Jaime Christen Holloway, BM  
Kimberly Blair Hughes, BS  
Michelle Johnson, BA  
Michael J. King, BS  
Effie Myra Klindt, BS  
Clint William Koch, BS  
Andrew James Kratzer, BS  
Suzanne Marie Lakas, BFA  
Woodrow Alexander Lake IV, BS  
Drew Mitchell Lane, BS  
Colton Ryan Langridge, BS  
Charles A. Lara, BS  
Nicole Crystin Larison, BS  
Mark Elliott Latham, BM  
Katrina Janelle Lee, BS  
Megan Jean Leger, BS  
David Joseph Leggett, BS  
Jacqueline Levett-Prinsep, BFA

Michael Wayne Lewis, BS  
Shannon R. Lewis, BAAS  
Joshua Taylor Lott, BM  
Amanda Elizabeth Lovorn, BS  
Sara Anne Luke, BFA  
Jill Kathryn Malazzo, BS  
Amanda Leigh Marrs, BS  
Michael Patrick Marshall, BFA  
Emily Elise Martinez, BM  
Dane Anthony Masek, BS  
Joseph Andrew Mattingly, BS  
Monica Michell Mays, BAAS  
Kyle Earl McAvoy, BFA



*A SHSU tradition, graduates hold hands in celebration at the end of the commencement ceremony.*

Ronald Acey McCaslin III, BAAS  
Joel Bryan McCray, BFA  
Randy Alan Meadors, BS  
Hector Manuel Menendez III, BS  
Ellen Rene Meredith, BFA  
Rachael Renae Mikeska, BS  
Chaney Ruth Moore, BFA  
Oscar Manuel Morales, BS  
Ty Douglas Morgan, BS  
Jordan William Muller, BFA  
Jenna Marie Myers, BFA  
Kaitlyn Noel Nachlinger, BS  
Melissa Elizabeth Needler, BFA  
Allan Michael Nevlud, BS



Members of Sam's 1964 NAIA Championship football team in action.

Joe Westley Nidever, BM  
Kevin Lloyd Nutt, BS  
Justin J. O'Brien, BS  
Kevin Adelbert O'Keeffe, BS  
Joseph Okere, BS  
Jamilyn Patrice Ondracek, BAAS  
Eric Ross Oneacre, BFA  
Priscilla Ortiz, BS  
Terkara Trenise Owens, BS  
Michelle Allison Palker, BS  
Darion Jarmar Patterson, BS  
Jessica Glynn Paul-Reyna, BAAS  
Brian Joseph Pavlock, BS  
Victoria Noelle Pearman, BFA  
Sicily Renee Pierce, BS  
Cory Lee Plata, BS  
Michael Brent Powell, BAAS  
Jonathan Barrett Pullen, BS  
Jacob Alexander Ramos, BM  
Meredith Joy Ramos, BM  
Keith Alan Raymond, BAAS  
Rebeca Reyna, BS  
David Jonah Riley, BS  
Casey Matlock Rice, BS  
Lee Anthony Rivera, BM  
Nicole Elizabeth Roberts, BS  
Charles Edward Robinson, BS  
Marcy Ellen Robinson, BS  
John Shannon Rodell Jr., BS  
Dori Ann Renee Rodriguez, BA  
Laura Lindsay Rodriguez, BM

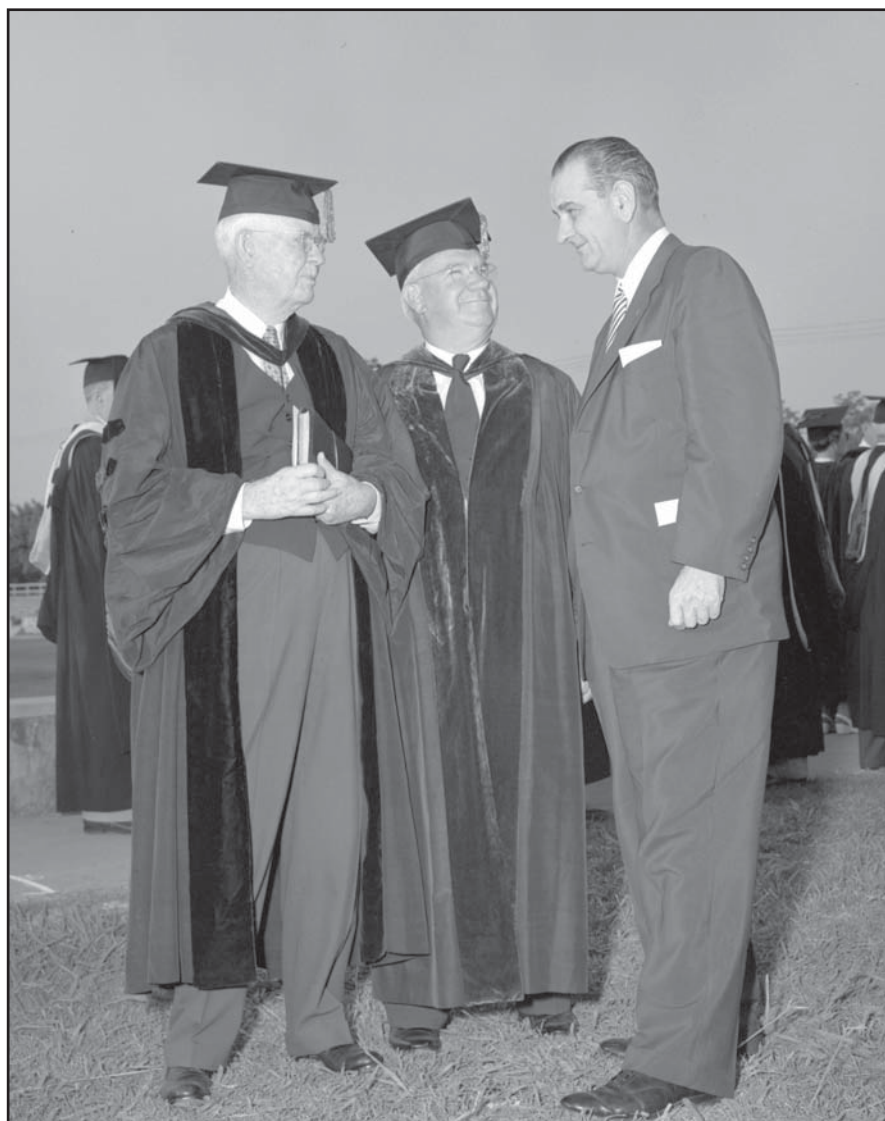
Thomas Michael Rogers, BS  
Jeffery Edward Rose, BS  
Justin Wayne Rowe, BS  
Adrian O. Runnels, BS  
Katy Marie Ryan, BS  
Gary James Savell, BS  
Crystal Aileen Scott, BFA  
Heather Ann Selbe, BFA  
Isaac Jonathan Serna, BS  
Brian Anthony Shane, BM  
David Lee Sheffield II, BS  
David Anthony Sherwood, BS  
Matthew James Shipley, BS  
Rachel Shoemaker, BS  
Nicholas Conrad Shumard, BS  
Kevin Paul Sidebottom, BS  
Warren Edward Sievert, BS  
Shannon Gayle Siless, BS  
David Alexander Silva, BS  
Lara Noel Sizemore, BS  
Grady Allen Smith, BS  
Kalor Wayne Smith, BS  
Michael Herbert Smith, BS  
William Landis Smith III, BS  
Samuel Jeremy Spurlock, BS  
Izavia Ladorris Strambler, BS  
Lauren Sanchez Stratton, BAAS  
Kenneth Duane Swatzel III, BS  
David Keith Taylor II, BS  
LaDawn Mechelle Taylor, BFA  
Rose Tello, BA

April Leigh Terry, BS  
Christopher Thompson S. Thelen, BS  
Caleb W. Thompson, BS  
Kara Elaine Thompson, BFA  
Ashley Nicole Tieken, BS  
Ryan James Tomczak, BS  
Madison Elizabeth Turner, BFA  
Britney RaeAnne Vick, BS  
Juan C. Villegas, BFA  
Marlene Sarai Villela, BS  
Brittini K. Voytilla, BS  
Maki Patricia Wada, BM  
Alston Ryan Wallis, BS  
Caleb Jon Wandell, BS  
Michael Stephen Weiss, BFA  
Paul Anthony Wendel, BS  
Katharine Michelle West, BS  
Dana Robin White, BS  
Matthew Vincent Whitney, BS  
Sarah Robin Wiley, BS  
Brad Stephen Williams, BS  
Jamie Leigh Williams, BS  
David Marshall Willis, BS  
James Allen Willis III, BM  
Mallory Beth Wilson, BS  
Natalie Renee Wiseniske, BS  
Richard Wayne Woychesin, BS



Many SHSU graduates decorate their caps with messages to family and friends.





*Senator Lyndon B. Johnson (right) addressed the student body in 1953.*

Over the years Sam Houston State University has been privileged to have many highly distinguished speakers address the student body on campus. One of Sam Houston's earliest notable speakers included Eleanor Roosevelt, who spoke on troubled youth in her visit to the university campus in 1937. Also included was former President Lyndon B. Johnson, the guest speaker at the 1953 commencement ceremony.

In March of 1980, Sam Houston laid the foundation to ensure its students would continue to have access to the most distinguished lecturers in the country from a variety of disciplines and professions through the inauguration of the Research Recognition Lecture program, later renamed the Distinguished Lecturer Series.

Since the series' implementation, Sam Houston has had 33 Distinguished Lecturers appear, including former President George H. Bush, Noble Prize Recipient Richard Smalley, NASA Astronaut John Young, Anthropologist Ashley Montagu, Pulitzer Prize Recipient Arthur M. Schlesinger, Jr., former National Security Advisor Zbigniew Brzezinski, Author and Economist John Kenneth Galbraith, American Pulitzer Prize winning Journalist David Halberstam, and former President of Poland Lech Walesa.

# COLLEGE OF BUSINESS ADMINISTRATION

*Dr. Mitchell J. Muehsam, Dean*

Congratulations. The faculty and staff of the College of Business Administration are proud of you and are pleased to welcome you to our family of Bearkat alumni. We are confident that the knowledge and skill sets you have acquired will serve you well in your future endeavors. Just as important, the personal traits that contributed to your success at Sam Houston State University will continue to play a prominent role in your life. Your ability to learn, your work ethic, your willingness to be a productive member of a team, your acceptance of constructive criticism, and your communication and interpersonal skills will serve as a solid foundation for a successful career.

Today's commencement marks the end of one journey and the beginning of another. As you pursue your professional dreams, please remember to seek a balance in your life and pursue excellence. The pursuit of excellence will provide you with many opportunities to position yourself to help your family, friends, and society as well as gain financial independence.

Sam Houston is a great name in education and we are proud that you have joined the thousands of quality graduates who are now fulfilling their dreams. Please stay in contact with us and the many friends you have made during your time at SHSU. The faculty and staff of the College of Business Administration congratulate you on this significant milestone.



Dr. Mitchell J. Muehsam, Dean



## *Master Degree Candidates*

Brittney N. Barbre, MBA  
Jordan David Bowersox, MBA  
Benjamin Mark Branstetter, MBA  
Lauren Michele Chapman, MBA  
Srinivas Reddy Chinakonda, MBA  
Max James Fruchtnicht, MBA  
Zeke Mendes Galo, MS  
Michael Corey Harris, MBA  
Trisha Ann Harvey, MBA  
Spencer G. Hicks, MBA  
Pei-Ting Huang, MS  
Christene Nicole Hughes, MBA  
Zachary J. Jallans, MBA  
Jaycie Marie Johnson, MBA  
Robert Driscoll Johnson, MBA  
Ruchi Ravindra Kamble, MBA  
Mickey Wayne Keeling, MBA  
Jennifer Lynn Kelley, MBA  
Jasvinder Singh Khurana, MBA

Kaci Lynn Konieczny, MS  
Venumadhava Reddy Kottapally, MBA  
Chien-Hsin Lee, MS  
Pavan Reddy Lingam, MS  
Patrick James Lynch Jr., MBA  
Bethany Karen Marshall, MBA  
Vaibhav Bhushan Master, MBA  
Guy L. McGriff Jr., MBA  
John Cody Moore, MBA  
Tony Ray Mouser, MS  
Sara Lange Nagel, MBA  
Tatsuya Okabe, MS  
Michael Charles Peel, MBA  
Warner Matthew Phelps, MBA  
William R. Phillips, MBA  
Angela Marie Polansky, MBA  
Hajiyefu Rena, MS  
Shakti Singh, MBA  
Marla Sue Slaughter, MBA

Irina Sotnikova, MBA  
Margaret Welter Tidwell, MBA  
David Steven Van Dorselaer, MBA  
Michael Pepela Wanjala, MBA  
Amber Jean Welchel, MBA  
Sara Guidry Williamson, MBA  
Paul Donald Yatsco, MBA

## Bachelor Degree Candidates

Ahmad M. Abuleil, BBA  
John Charles Agathon III, BBA  
Sharon Elizabeth Albert, BBA  
Derrick Thomas Alger, BBA  
Balqees A. Alghamdi, BBA  
Lauren Brooke Allen, BBA  
Kimberly Alvarez, BBA  
Roger Michael Anderson, BBA  
Thomas D. Anderson, BBA  
Tye Keton Archer, BBA  
Laura Lizett Arriaga, BBA  
Lacey Brooke Aston, BBA  
Candace Marie Autwell, BBA  
George Michael Azar, BBA  
Anna Elisabeth Bailey, BBA  
Amanda Nicole Baske, BBA  
Patrick Lewis Beck, BBA  
Shay Mitchell Beisert, BBA  
Irvin Arnaldo Bermudez, BBA  
Regina Loreta Bertsch, BBA  
Amy Nichole Beyer, BBA  
Jessica Shea Black, BBA  
Fernando James Blackgoat, BBA  
Gerran Blevins, BBA  
Brian M. Block, BBA  
Afton Michelle Booker, BBA  
Jason Ben Boydston, BA  
Patrick Joseph Bradley, BBA  
Kelli Renee Bright, BBA  
Jeanice Alayna Brooks, BBA  
Nicholas Aaron Brown, BBA  
Erienne Alycia Bryant, BBA  
Jenna Dawn Buch, BBA  
Jesse D. Burgess, BBA  
Joseph Glenn Buvid, BBA  
Stephanie Leann Cain, BBA  
Reneshea Darneise Calloway, BBA  
Laura Elizabeth Cameron, BBA  
Nicholas Jordan Camp, BBA  
Courtney Rebecca Campbell, BBA  
Debbie Marie Campbell, BBA  
Michelle G. Caruso, BBA  
Ivonne Cedillo, BBA  
Eric Wayne Cegielski, BBA  
Terrence Lenox Chatmon, BBA  
Kelly Marie Cheatwood, BBA  
Rick Joseph Chiappetta, BBA *Awarded Posthumously*  
Natalie Elyse Clark, BBA  
Scott David Clark, BBA

Justin Anthony Clasen, BBA  
Daniel William Cloud, BBA  
Sharin Elizabeth Cole, BBA  
Brett Clayton Comstock, BBA  
Tyler Lynn Cooper, BBA  
William Ross Crawford, BBA  
Kimberly Fern Creagh, BBA  
Alexander B. Crowder, BBA  
Ivi Nancy Cruz, BBA  
John Fredrick Czichos, BBA  
Stephan Fletcher Darnell, BBA  
Curtis Wayne Davis, BBA  
Mayra DeLeon, BBA  
Bianca Monet Dennis, BBA  
Jennifer Sue Dent, BBA  
Alyse Ann Dickens, BBA  
Matthew John Diggins, BBA  
Urien Adam Dill, BBA  
Darrell Lyn Dolley Jr., BBA  
Jennifer Chrystine Doucette, BBA  
Jessica Nicole Doucette, BBA  
Caley Anne Katherine Douglas, BBA  
Cynthia Marie Duran, BBA  
Brian Christopher Eckhoff, BBA  
Chinenye Chinweotuto Egele, BBA  
Christian Stephen Evans, BBA  
Anthony Joseph Fixel, BBA  
Austen Michael Ferguson, BBA



*Sam Houston State University is known for a diverse student body and friendly atmosphere.*

Jared R. Fikes, BBA  
Jessica Nicole Fitzhugh, BBA  
Diana Victoria Flores, BBA  
Jeffrey Craig Fontenot, BBA  
Paige Hart Fox, BBA  
Thomas Wayne Friudenberg, BBA  
Sean Michael Fuller, BBA  
Rainatu Ranee Gabisi, BBA  
Sunny Brianne Gardner, BBA  
Tiffany Janice Gardner, BBA  
Sandra Monique Garza, BBA  
Alan Joseph Gaska, BBA  
Heather Kaye George, BBA  
Shawn Andrew Gifford, BBA  
Anna A. Gomez, BBA  
Natalie Yvonne Gonzalez, BBA  
Michaela Marie Green, BBA  
Karina Lynn Griffin, BBA  
Stephanie Ann Groesbeck, BBA  
Kelby Klay Grohmann, BBA  
Michael Adrian Hardy, BBA  
Natasha Lee Harris, BBA  
Derrick James Heath, BBA  
Ashlea Kathryn Hedtke, BBA  
Amber Dawn Henley, BBA  
April Leanne Hensley, BBA  
Michael Hernandez, BBA  
Clifton Dale Heuszel, BBA  
Jessica Lynne Hickman, BBA  
Kail Wesley Hidalgo, BBA  
Mallory Ann Hite, BBA  
Kenny Jerald Holland, BBA  
Ashley Lauren Hollis, BBA  
Robert Howard Holroyd Jr., BBA  
Sara Leann Hopkins, BBA  
Kris Darrett Hosea, BBA  
Angela Marie Hovis, BBA  
Jamerica Shontrel Howard, BBA  
Samuel Idialu, BBA  
Hallary Tahiru Jagiere, BBA  
Jordan Michael Januse, BBA  
Ashley Marie Jimerson, BBA  
Earnest Henry Johnson II, BBA  
Elizabeth Anne Johnson, BBA  
Marlee Michele Elizabeth Johnson, BBA  
Robert Driscoll Johnson, BBA  
Dustin Alan Johnston, BBA  
Kassidy Danyel Jones, BBA  
Jeffrey Ryan Kaiser, BBA  
Melanie Ann Kalisek, BBA  
Lee A. Kearsse, BBA



*In 1937, First Lady Eleanor Roosevelt addressed the student body.*

Melanie Denise Keller, BBA  
John Marshall Kiger, BBA  
Steven Joseph Konieczny, BBA  
Kolin Lee Kunkel, BBA  
Nathan Paul Kunkel, BBA  
Richard W. Kurtz, BBA  
Edward Dwight Lenoir Jr., BBA  
Roland Anthony Lewis, BBA  
Jason Edward Lind, BBA  
Christina Marie Lipinsky, BBA  
Spencer John Loalbo, BBA  
Biswas Lohani, BBA  
Mercedes Lopez IV, BBA  
Kymberly Joy Loving, BBA  
Jessica Ann Luther, BBA  
Chad Martin Lynch, BBA  
Greg Alan Macha, BBA  
Kim Mai, BBA  
Jennifer Leigh Marek, BBA  
Evan David Martinek, BBA  
Donald C. Matthews, BBA  
Jeffrey Ian McCabe, BBA  
Christopher Tyler McCaffety, BBA  
William James McClure, BBA  
John Charles McCray, BBA  
Ashley Paige McLeod, BBA  
Brent Joseph Mica, BBA  
Karla Eva Migliorino, BBA  
Amber Dawn Miller, BBA  
Jeffery George Miller, BBA  
Elizabeth Daleo Minter, BBA

Stefanie Nicole Mitschke, BBA  
Brittany Nicole Moore, BBA  
Dena Ione Morgan, BBA  
Christopher Lee Munoz, BBA  
Britton Lee Munson, BBA  
Cadie Michelle Musick, BBA  
Christopher David Nelson, BBA  
Rebecca Marie Nelson, BBA  
Seth Colton Newsome, BBA  
Kevin Dwayne Odom, BBA  
Brandi M. Parker, BBA  
Ashley Renee Pearson, BBA  
Cathrine Michelle Peck, BBA  
Amanda Kathleen Peele, BBA  
Matthew Allen Pharis, BBA  
Christina Denise Phillips, BBA  
Robert Murray Pollard, BBA  
Ashten Leigh Postell, BBA  
Zenetta Janae Potts, BBA  
Christopher Todd Price III, BBA  
Michelle Christine Prince, BBA  
Hillary Lee Proctor, BBA  
Natalie Marie Pruitt, BBA  
Kevin Anthony Pugh, BBA  
Jordan Chandler Ramirez, BBA  
Tommy Wayne Rapsilver III, BBA  
Rebekah Faye Reed, BBA  
Kelli Renee Ripple, BBA  
Tommy Daniel Ritchie, BBA  
Artis R. Rivers Jr., BBA  
Damon D. Robbins, BBA

MarKetha Denise Rosborough, BBA  
Meghan Alicia Sadler, BBA  
Christina Cheri Samson, BBA  
Jordan Wayne Sanders, BBA  
Nicholas L. Sanders, BBA  
Ashley Joan Schneider, BBA  
Tracy Kittell Schultz, BBA  
Clayton Allen Sewell, BBA  
Marc Anthony Showman, BBA  
Eloho Sylvia Sido, BBA  
Ashley Nicole Simien, BBA  
Alexander W. Slack, BBA  
Kristopher Kagen Smith, BBA  
Shannon Nicole Smith, BBA  
Alyssa Ranae Snell, BBA  
Joscelyn Leigh Sodergren, BBA  
Nathan Alan Sostarich, BBA  
Sherry Leslie Soundy, BBA  
Jacob Edward Sowders, BBA  
Laura Anne Steele, BBA  
Thomas Michael Stenack II, BBA  
Patrick Shane Stephenson, BBA  
Damekia Latrease Stevens, BBA  
Laurel Ann Stevens, BBA  
Mark Wayne Stockwell Jr., BBA  
Britnee Lynne Stokes, BBA  
Julia Lynn Stoner, BBA  
Christopher Thomas Stout, BBA  
Ryan Isaac Streepy, BBA  
Whitney Lynn Stutes, BBA  
Nathan Scott Suderman, BBA  
Kristin Leann Sullivan, BBA  
Kyle Robert Sullivan, BBA  
Alexandra K. Survant, BBA  
Ciera Nichole Swickard, BBA  
Laura Kathryn Sykes, BBA  
Melinda Kay Tackett, BBA  
John Allen Taylor Jr., BBA  
Amy Marie Thomas, BBA  
Christopher Ross Thompson, BBA  
Amanda Rachel Thurson, BBA  
Jason M. Touchstone, BBA  
Robert Donald Tripp III, BBA  
Giovanni J. Vargas, BBA  
James Hamilton Vick, BBA  
Michael Rene Villarreal, BBA  
Charles Fredrick Vogel II, BBA  
Andrew Chandler Volpe, BBA  
Chantal Janay Wagner, BBA  
Carol Laurice Walker, BBA  
Tamesa N. Walker, BBA

*College of Business Administration*

Rio Maxwell Walling, BBA  
Timothy A. Watkins Jr., BBA  
Nichole Marie Watkins, BBA  
Tracy Lenis Webb, BBA  
Lynnet Marie Wehman, BBA  
Craig Kyle Wheaton, BBA  
Sylvia Lanora Wheeler, BBA  
Lindsay Michelle White, BBA  
Ross Randall White, BBA  
Wesley Todd Wickersham, BBA  
Elizabeth Gibson Williams, BBA  
Matthew Thomas Williams, BBA  
Rayshard D. Williams, BBA  
Tristan Sean Wright, BBA  
Dongfang Xiao, BBA  
Justin Paul Zapalac, BBA  
Jonathan Wesley Zmolik, BBA



*The iconic Old Main building (1880's) before it was destroyed by a fire in 1982.*

# COLLEGE OF CRIMINAL JUSTICE

*Dr. Vincent J. Webb, Dean*

Congratulations. Today is a day you will always remember. I salute you and recognize you for your efforts that led to achieving this important milestone.

You have been born into an age of extraordinary possibilities, and you hold the key to a bright future with the use of your many talents and capabilities. This is not to say that your lives will always be easy - even the most successful people struggle at times. Please take comfort in the fact that professionally there is no single path to success, but there are many paths and I am confident that you will find the one that serves you best.

Whatever career path you choose or wherever your career leads you I hope you will always seek to gain knowledge, for as the “old adage” says – knowledge is power. And, to quote Benjamin Franklin, “An investment in knowledge always pays the best interest.”

I also want to thank your parents, friends, relatives, and loved ones who have been there for you as you have worked toward this achievement.

As you transition into the next phase of your life, I wish you happiness and success in all your future endeavors. I hope the College of Criminal Justice remains an important part of your lives.



Dr. Vincent J. Webb, Dean



*U.S. News & World Report says Sam is:  
“Growing Fast, Staying Friendly”*

## *Doctor of Philosophy*

### **George James Day II**

Dissertation Title: *Family Time Behind Bars: The Effect of Visitation on Institutional Misconduct and Recidivism among Juvenile Offenders*

Dissertation Committee Chair: Dr. Hee-Jong Joo

### **Nhatthien Quang Nguyen**

Dissertation Title: *Assessment of Impact Factors on Crimes through the Use of Real-Time Crime Analysis*

Dissertation Committee Chair: Dr. Larry T. Hoover

### **Michelle Yvette Richter**

Dissertation Title: *Police Response to Persons with Mental Illness by Census Tract Characteristics*

Dissertation Committee Chair: Dr. Larry T. Hoover



TV news celebrity Dan Rather graduated from Sam in 1953.

### *Master Degree Candidates*

Katie Megan Akeroyd, MA  
Abbigail Kaitlyn Damron, MS  
Gustavo Enrique Gallegos, MA  
Megan Lindsee Gray, MA  
Nastassia Ashley Howlett, MA  
Jamie Marie Jones, MA  
Amanda Marie Knickerbocker, MS  
Yi-Fen Lu, MA  
Ted Tadlock, MS  
Yi-Chun Yu, MA

### *Bachelor Degree Candidates*

Mario Alcaraz Jr., BA  
David Joe Allen, BS  
Joshua Austin Altman, BS  
Juana Cristal Alvarado, BA  
Amy Kay Anderson, BS  
Stephanie Nicole Arcizo, BS  
Tymmer Lizette Arnold, BS  
Jamie Lee Baker, BA  
Michael James Barnett, BS  
Ashley Meagan Beck, BS  
Kristen Nichole Beeston, BA  
Matthew David Betterton, BS  
Cole Lynn Bishop, BS  
Calab Colby Bowling, BS  
Rajveer Kaur Boyal, BS  
Troy Dillon Bradshaw, BA  
Amanda Lynn Brooks, BS  
Jessica Daniele Brown, BS  
Katie Georgina Brown, BA  
Shara Shree Brown, BA  
Christopher Mazrolle Burgess, BA  
Evan Spencer Burke, BS  
Seth Allen Butterworth, BS  
Tameeka Nicole Caddell, BA  
Charles Lewis Cadenhead III, BS  
Garrett Hall Calpouzos, BA  
Spencer Philip Cannyn, BS  
Rose Marie Carrillo, BA  
Ian Connor Castleschouldt, BS  
Carolina Cavazos, BA  
Alexis Carrinda Chapa, BA  
Jonathon Vincent Clark, BA  
Carter Leigh Cole, BS  
AnnMarie Blythe Cunningham, BA  
Whitney LeAnn Curtis, BA  
Weston James Dancewicz, BS  
Michelle Lee Daugherty, BS  
Eric Lance Davis, BS  
Tor Jack Day, BS  
Jeffery Lynn Dean II, BS  
Vincent Michael Del Broccolo, BS  
Anthony Jerome Dennis, BA  
Rosemary Diaz, BA  
Elissa Rene Jones Dillard, BS  
Kyle Douglas Dimmitt, BS  
Travis Lawrence Dio, BS  
Ashley Annie Louise Dixon, BA  
Marissa Shenee Dixon Hatten, BS  
Keshia A. Dokes, BS  
Latoyka Denay Drake, BA  
Lyndsay Marie East, BS  
Ivana Cristina Ellas, BS  
Olivia Hassen Emig, BS  
Jonathan David Epperson, BS  
Nicholas Ray Farmer, BA  
Joshua D. Fay, BA  
Amanda June Ferri, BS  
Kenneth Todd Fibich, BA  
Robert Paul Ford II, BA  
Justin William Forner, BA  
Amanda Lauren Free, BS  
Laura Ann Gafford, BA  
Noe Adiel Galdamez, BS  
Roberto Garate, BS  
Cesar Garcia, BA  
Raymond Kenneth Gaskin III, BA  
Michael Dewayne Gesford, BS  
Katelyn Michelle Glesmann, BS  
Aurora Gomez, BS  
Alma Elisa Gonzalez, BA  
Javier Jerrell Guerrero Jr., BS  
Emily Jean Guillory, BS  
Wendy Gayle Hancock, BS  
Ashley Christine Heath, BA  
Angelica Hernandez, BA  
Kelsey Brooke Higginbotham, BA  
Chasitti Rai Hines, BS  
Frederick Charles Hines Jr., BS  
Ngoc-Anh Thuy Ho, BA  
Kalen Mark Houck, BA  
Dezmond Jermaine Hughes, BA  
Stephanie M. Hulon, BS  
Taylor Kathleen Hutson, BS  
Britney Ann Hyde, BS  
Charles Thomas Inman Jr., BS  
Robin Diedra Jackson, BA  
Trevin DeShawn James, BA  
Ryan Keith Johme, BA  
Jaida T. Johnson, BA  
Jeremy De'von Johnson, BS  
Lauren Nicole Johnson, BA  
Riaco R. Johnson, BA  
Haley Michelle Kelly, BA  
Brian Rahshad Kennedy, BS  
Morse Bernard Kent IV, BS  
Kendell Landon Kerns, BA  
Johanna Marie Kessling, BS  
Autumn Leigh King, BA  
Jessica Lynn Klein, BS  
Richard Eads Knox III, BS



*The Lowman Student Center in 1964.*

Kristin Marie Kochan, BA  
Shane Matthew Krantz, BS  
Lindsie B. Krause, BS  
Patrick Alan Landgraf, BS  
Robert Paul Langner, BS  
Nicole Crystin Larison, BS  
Heather Dawn Lewis, BS  
Michael Wayne Lewis, BS  
Brittney Clarice Lilton, BA  
John C. Lisano-Breckenridge, BS  
Aaron Baldemar Lopez, BA  
Amanda Christine Lovelady, BS  
Christina Ann Manry, BS  
Jessika Maribel Marcos, BA  
Diana Leticia Marengo, BA  
Rosalinda Marez, BA  
Chloe Loryce Mason, BS  
Shalekka Michon Mason, BS  
Steven Andrew McCoy, BS  
James Logan McCune, BA  
Karla Patricia Mena, BA

Carla Renee Miranda, BA  
Jackson McFerrin Morris, BS  
Ernest Nanes, BS  
Matthew Thomas Nielsen, BS  
Rachael Elizabeth Nixon, BS  
Jeffrey Cummings Norcross, BS  
Joshua Andrew Orin, BS  
Talah Jevon Pantallion, BS  
Richard Nelson Parker Jr., BS  
Carrie Berry Paul, BA  
Bradley James Peacock, BS  
Amy Lee Pierce, BA  
Karissia Rena Qualls, BS  
Amanda Lee Reiter, BS  
Rebeca Reyna, BS  
Lisa E. Rodriguez, BS  
Marcus Dewayne Rutherford, BS  
David Sanchez, BA  
Christopher Michael Scheets, BS  
Jeanette Bray Seay, BS  
Brandy Rachele Thomas Shannon, BS

Nicole Marie Simmons, BS  
Benjamin Jay Smith, BA  
Michael J. Smith, BS  
Vanessa Nicole Snook, BS  
Brandon Donovan Snyder, BS  
James Terrel Soefje, BS  
Steffen Roshaun Sowell, BS  
Jennifer S. Stark, BS  
Nathan Andrew Sterling, BS  
Shela Dawn Stovall, BS  
John F. Sullivan, BS  
Shiarnice T. Taylor, BA  
Nelson Armando Torres Jr., BA  
Arthur Tovar, BS  
Derek Scott Townsend II, BS  
Aaron Mathew Tullar, BA  
Krystle Leigh Vestal, BS  
Mark H. Wade, BS  
Victoria Michele Walker, BA  
Leah K. Watkins, BS  
Kevin Kristopher Welch, BS  
Jason Colby Wester, BA  
Brandon Perry White, BA  
Sharnice Nicole Wilkinson, BS  
Lance Ray Willson, BS  
Janetra D. Winston, BA  
Rex J. Wright, BS  
Mark Christopher Wyatt, BA  
Diamondmarquiserachelle Shamice Wynne, BS  
Zachary Bennett Zopfi, BS



*A member of the 1959 Rodeo Team.*





*The 67-foot tall statue of General Sam Houston was completed in 1994.*

The 67-ft. tall (plus 10-ft. base) statue is named “A Tribute to Courage.” Sam Houston, celebrated political architect of Texas, towers in concrete above Interstate 45, with walking cane and the attire of a 19th century statesman. “Big Sam” is the second largest freestanding statue in the US and the tallest statue of an American hero.

Artist David Adickes, Huntsville native and Sam Houston State University graduate, sculpted this colossal monument to the man who still inspires Texans to reach lofty heights. Adickes started in early 1992, not exactly certain how he would accomplish the massive project. The 25-ton steel-and-concrete colossus is comprised of 10-foot sections, each containing five layers of concrete reinforced with steel straps. The outside layer includes a fiberglass mesh. It was dedicated on October 22, 1994.

Sam Houston (1793-1863) remembered the Alamo with his surprise victory over Santa Anna’s Mexican Army at San Jacinto. He then went on to become President of the Republic of Texas, Governor of the State of Texas, and a US Senator. Sam Houston retired to Huntsville, Texas, where he died before the end of the Civil War. Sam Houston State University was named in honor of this great hero.

# COLLEGE OF EDUCATION

*Dr. Genevieve H. Brown, Dean*

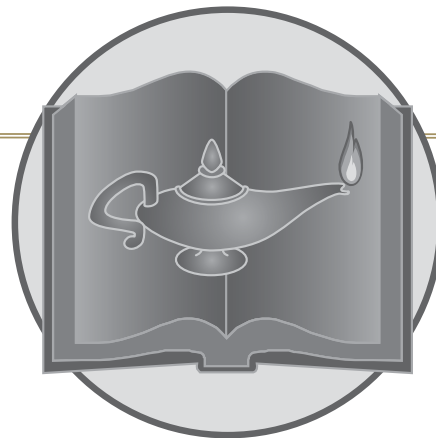
The administration, faculty, and staff of the College of Education share in your joy and pride at the completion of your bachelors, masters, or doctoral degree. We recognize that the accomplishment of this milestone required commitment and discipline and that, in most cases, not only you, but also your family, have made great sacrifices along the way. Congratulations on a job well done, and thank you for allowing us to be a part of your success.

We commend you on choosing a helping profession. “Responding to the needs of others” is a core value of the College of Education and one that is representative of the career you have chosen. The countless hours you spent in volunteer community outreach efforts and service during your time at SHSU are a testament to your commitment to that core value. We sincerely hope this commitment continues to characterize your life, as well as your profession.

John Adams, the second president of the United States, pointed out that “There are two types of education. One should teach us how to make a living. The other should teach us how to live.” We in the College of Education have endeavored to ensure that you have not only the skills necessary for success in making a living, but also that you are prepared to live well and to have a positive impact on those around you as well as on your community. Your integrity, compassion, and willingness to serve others are certain to enhance your career and your life. Again, congratulations and best wishes in your future endeavors.

*Genevieve Brown*

Dr. Genevieve H. Brown, Dean



## *Doctor of Education*

### **Kirsten Lynn Allman**

Dissertation Title: *Students with Disabilities: The Impact of Student Discipline on Academic Achievement*  
Dissertation Committee Chair: Dr. John R. Slate

### **Parvin Behroozi-Bagherpour**

Dissertation Title: *International Student Retention in a Large Texas Urban Community College*  
Dissertation Committee Chair: Dr. Stacey L. Edmonson

### **Brian Stephen Greeney**

Dissertation Title: *High School Size, Student Achievement, and School Climate: A Multi-Year Study*  
Dissertation Committee Chair: Dr. John R. Slate

### **Michele Reyne Hilberth**

Dissertation Title: *Black and White Texas Middle School Student Discipline Referral Consequences and Their Relationship to Academic Achievement*  
Dissertation Committee Chair: Dr. John R. Slate

### **Lydia Celeste Lilly**

Dissertation Title: *Implementation of Response to Intervention: A Case Study in a Suburban Texas School District*  
Dissertation Committee Co-Chairs: Drs. Beverly J. Irby and Dianne Reed

### **Brian Orville McDonald**

Dissertation Title: *A Comparative Analysis of Two Groups of Middle School Mathematics Teachers with High and Low Student Gains*  
Dissertation Committee Co-Chairs: Drs. Barbara Polnick and Rebecca A. Robles-Piña



*Sam Houston takes pride in welcoming all non-traditional students.*

### *Doctor of Philosophy*

#### **Rebecca Karen Frels**

Dissertation Title: *The Experiences and Perceptions of Selected Mentors: The Dyadic Relationship in School-Based Mentoring*

Dissertation Committee Chair: Dr. Anthony J. Onwuegbuzie

#### **Marlene Therese Moriarity**

Dissertation Title: *The Essential Components of Coach Training for Mental Health Professionals: A Delphi Study*

Dissertation Committee Co-Chairs: Drs. Richard Watts and Rebecca M. Bustamante

#### **Bipin Sharma**

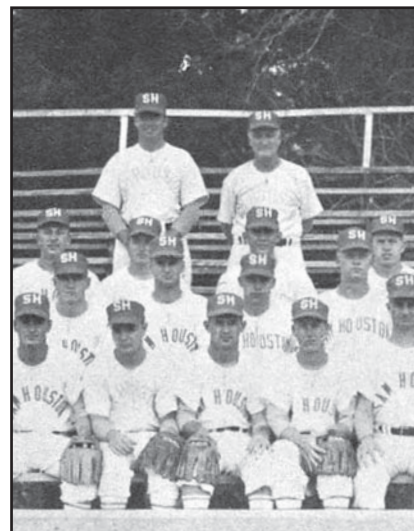
Dissertation Title: *The Differences between First-Generation American-Born Asian Indian Hindus and Immigrated Asian Indian Hindus on Measures of Acculturation, Self-Concept, and Attitudes toward Counseling: A Mixed Methods Study*

Dissertation Committee Chair: Dr. Mary Nichter

#### **Marcella Dortch Stark**

Dissertation Title: *The Influence of Fees on Supervision of Licensed Professional Counselor Interns in Texas: A Mixed-Methods Study*

Dissertation Committee Co-Chairs: Drs. Mary Nichter and Richard Watts



*In 1963, SHSU's men's baseball team won the NAIA World Series Championship.*

### *Master Degree Candidates*

Carrie Beth Allen, MA  
 Felicia Francine Alston, MED  
 Douglas Wayne Anderson, MED  
 Linda Diane Applewhite, MED  
 Eileen Marie Bauerschlag, MLS  
 Lisa Kay Bender, MED  
 Ashley Hook Bennett, MED  
 Jean L. Borzik, MED  
 Jennifer Elizabeth Brawley, MED  
 Jeffrey Paul Brown, MED  
 Michelle Ann Brown, MLS  
 Taylor Lauren Burba, MED  
 Vonetta Chevon Carey, MED  
 Vincent Cartwright, MED  
 William Allen Clegg, MA  
 Eric Neil Coker, MED  
 Jovanne Michelle Cole, MED  
 Margaret Renee Cosby, MED  
 Carla J. Craig, MED  
 Kameron Ashley Cramer, MED  
 Robert James Cunningham, MED  
 Sally Anne Dare, MLS  
 Monica Luevano DeLeon, MLS  
 Edengaile Ibay Dionisio, MED  
 Brian Anthony Duval, MA  
 Kristin E. Falcon, MED  
 Brenda Bravo Falcone, MED  
 April Ann Finney, MED  
 Jennifer Rose Fisher, MA  
 Veronica Flores, MLS  
 Eileen Sandra Fugate, MED  
 Robert Keith Fulgham, MED  
 Blaine Patrick Ganter, MED  
 Susan Seely Garcia, MA  
 Julie Christine Gibson, MA  
 Elizabeth Jordan Gilbert, MLS

Alfred Layton Gill Jr., MED  
 Vanessa Marie Gonzales, MA  
 Norma M. Gonzalez, MLS  
 Kade Allen Griffin, MED  
 Julie Michelle Gruber, MED  
 Melissa Mae Gutierrez, MED  
 Amy Lynne Hall, MLS  
 Kristi Ann Hallbauer, MLS  
 Melaney Jameel Herron, MED  
 Darius Lavon Hester, MED  
 Mitzi Joann C. Higginbotham, MED  
 Martha Laura Hines, MED  
 Danielle Edna Hurst, MED  
 Abiola Anthony Junaid, MA  
 Sondra Junek, MED  
 Michael J. Kaatz Jr., MED  
 Melinda Beth Kamm, MED  
 Wendi Nichole Kamman, MED  
 Jeanne M. Kavanaugh, MED  
 Paul Jerry Kopecky III, MA  
 Kasaundra Autumn Music Kramer, MA  
 Dana Elizabeth Krebs, MED  
 Joshua Christian Kubik, MED  
 Jennifer Rene Lawles, MED  
 Marina Perez Lopez, MLS  
 Kelly Lowe, MED  
 Sarah DeeAnn McBride, MLS  
 Joy Vollman McGarry, MLS  
 Jana Marie McLain, MED  
 Melissa Sandoval Moore, MLS  
 Amber Byrd Morris, MLS  
 Mariko Ashlee Nakanishi, MLS  
 Regina Morales Navarro, MED  
 Patricia A. Nester, MLS  
 Brandi Leigh Newberg, MED  
 Francisca Maidoh Nwoko, MED  
 Alma Delia Ovalle, MLS  
 Sheri Sassman Parker, MED

Heidi Nicole Peterson, MED  
 Rachel Jean Peterson, MED  
 Valerie A. Pierce, MED  
 Debria Nachele Pralour, MED  
 Stacie Michelle Quick, MED  
 Kathleen A. Reis, MLS  
 Yolanda Renee Rockins, MED  
 Anita Michelle Rudd, MED  
 Kimberlea Ann Saltzman, MA  
 Dana L. Saucedo, MED  
 Patrick Jerrod Shelby, MA  
 James Brian Shillingburg, MED  
 Theresa Bazycki Shreve, MED  
 Delisha Renee Simon, MED  
 Courtney Jo Smart, MA  
 Debra Clayton Smith, MED  
 Jamy Lea Smith, MED  
 Patricia Ann Smith, MED  
 Patricia Ramirez Sosa, MLS  
 Jared Robert Stice, MED  
 Helen Miranda Suan, MED  
 Gladys Elaine Terrelongue, MED  
 Mickal Glenn Terry, MA  
 Martha Megan Torregrossa, MED  
 Cheryl Christine Townsend, MED  
 Belinda Valenzuela, MA  
 Melissa Paige Vermillion, MA  
 Justin Wade Vick, MED  
 Jamie Hood Warnock, MED  
 Mandy Sue Watson, MLS  
 David Allen Waxler, MA  
 David Mark Weir, MA  
 Erin Reed Young, MED  
 Mellissa Marie Zipp, MLS  
 Rose Michelle Zuniga, MED

## Bachelor Degree Candidates

Maegan Louise Admire, BS  
Natarra Cherrell Allen, BS  
Samantha Alvarado, BS  
Stephanie E. Ambrocik, BS  
Delicia Brionne Arnic, BS  
Kimberly N. Ashworth, BS  
Kyliesha Marie August, BS  
Charly Adell Baker, BS  
Whitney Elise Barefield, BS  
Amanda Lee Barker, BS  
Ronald Edward Barteel Jr., BS  
Kayla Dell Barton, BS  
Martin Maniago Basa, BS  
Heather Nicole Blume, BS  
Ashley Lynette Brady, BS  
Rachel Marie Brewer, BS  
Danielle Marie Brewington, BS  
Charles Christopher Briganti, BS  
Heather Cheri Brock, BS  
Brittany Taylor Brown, BS  
Monica Michelle Bujnoch, BS  
Candace Lea Bunch, BS  
Lauren Elizabeth Burns, BS  
Josephine Padilla Bustos, BS  
Jessica Alexandra Byrne, BS  
Kelly Ann Canady, BS  
Michelle Marlene Case, BS  
Hailey Erin Chapman, BS  
Stephanie Gayle Chmelar, BS  
Shirley-Anne Regnier Classen, BS  
Brandon Reed Closner, BS  
Bryson Anne Colley, BS  
Katherine E. Collins, BS  
Laura Nicole Colwell, BS  
Katherine Elizabeth Conley, BS  
Shannon Marie Conroy, BS  
Eva Marie Contreras, BS  
Kelsey Cheyenne Copeland, BS  
Carroll Kyle Crosby, BS  
Sarah Eloise Cross, BS  
Melissa Michelle Culver, BS  
Lauren Nicole Curlee, BS  
Stephanie Ann Dannels, BS  
Cerece Shantá Darby, BS  
Terra'Neisha Renay Darthard, BS  
Amanda Danielle Daughety, BS  
Juan Bernard Davis II, BS  
Carly Dale Davis, BS  
Chiquita Necale Davis, BS  
Jacob N. Delisle, BS  
Sarah Grace Dougherty, BS  
Audrey Diane Dowling, BS  
Emily Ann Dublin, BS

Crockett Drew Dubose, BS  
Amanda Danielle Durrett, BS  
Jennifer Marie Edenfield, BS  
Ashley M. Ehlert, BS  
Tieler Christian Ellis, BS  
Emily Shea Ellisor, BS  
Madeline Dee Endris, BS  
Candice Etzler, BS  
Natalie Eileen Evans, BS  
Erin Nicole Fain, BS  
Cristin J. Farr, BS  
Elly Felson, BS  
Janna D'Lynn Fenner, BS  
Stephen Milfred Ferguson, BS  
Lisa Ann Ferree, BS  
Joshua P. Fife, BS  
Emily Elizabeth Flynt, BS  
Jamie Simone Foster, BS  
Joslyn Jean Fuerman, BS



*The 1981 Ladykat National Championship Softball Team.*

Sarah Elizabeth Galeucia, BS  
Katherine Marie Garant, BS  
Catherine Nicole Gary, BS  
Sara Brooke Gatlin, BS  
Kaylan Renee Gaynor, BS  
Caroline J. Gnatzig, BS  
Blanca Rosa Gomez, BS  
Alyssa Nichole Gonzales, BS  
Thomas J. Graham, BS  
Lindsay Nicole Griffith, BS  
Sarah Lynn Growsns, BS  
Blanca Maria Guerra, BS  
Michelle Raye Hamner, BS  
Annie Beth Hawkins, BS  
Cody Robert Hayes, BS  
Sheena Charme Henderson, BS  
April Joy Henry, BS  
Brittany Leann Henson, BS  
Heather Renea Hicks, BS  
Shai Brittany Hinojosa, BS  
Hayley Adair Hinson, BS

Billie Rose Holland, BS  
Macy Erin Hoover, BS  
Terrance Lamont Hopkins, BS  
Rachel Louise Hornung, BS  
Heather Jo Hoyland, BS  
Jessica Ann Huettel, BS  
Hollyann Marie Hutchins, BS  
Monica Claire Hutton, BS  
Donescia Monique Hypolite, BS  
Jamie Lynn Idom, BS  
Sarah Michelle Ison, BS  
Chandra Kay Jackson, BS  
John William Theodore Jackson, BS  
Cassie Lynn Jeffcoat, BS  
Ashley Nicole Jeter, BS  
Hayley Joyce Johnston, BS  
Denise Joiner, BS  
Cassie Marie Karm, BS  
Tiffany Lida Keiser, BS  
Naomi Grace Keller, BS  
Christina Renee Kelly, BS  
Tammy Lynn Kelly, BS  
Kerri Anne Kiser, BS  
Holley Ann Kloosterman, BS  
Sarah Jane Knigge, BS  
Keilan Douglas Kyle, BS  
John Zachary Landry, BS  
Lance Christopher Larson, BS  
Shelby Loree Leonard, BS  
Jakaylyn C. Leveston, BS  
Christine Marie Lies, BS  
Amanda Lorene Lindsey, BS  
Benjamin Monroe Lininger, BS  
Michelle Lucio, BS  
Casey Lynn Luera, BS  
Gustavo Leos Luna, BS  
Kate Anna Maguire, BS  
Aaron Jacob Mahoney, BS  
Erika E. Mandeville, BS  
Cameron L. Marshall, BS  
Sarah Lynn Marshall, BS  
Alondra Martinez, BS  
Betania Martinez, BS  
Melissa Marie Mason, BS  
Erika Mary Massoud, BS  
Lundin Ray Matthews, BS  
Monika Reneé May, BS  
Faith Mbanusi, BS  
Jason William McAuliffe, BS  
Tiffany Lynn McClure, BS  
Carrie McDonald, BS  
Shineka Mante McGuire, BS  
Leigh Ann McWhorter, BS  
Amy Jean McWilliams, BS  
Faith Rochelle Meek, BS



*In 1981, the men's golf team won its fourth consecutive NAIA Championship.*

Jennifer Lynn Meredith, BS  
Robert James Meyer, BS  
Susanne Janet Mokry, BS  
Joana E. Morin, BS  
Erin Dyan Morris, BS  
Michael Shane Morrison, BS  
Michelle Yvonne Mullan, BS  
Aurora Munoz, BS  
Amanda Lynn Naron, BS  
Ashley Paige Nelson, BS  
Julia Kate Newsum, BS  
Thuy-Tien Hoang Ngo, BS  
Cindy Le Nguyen, BS  
Tiffany Amber Nors, BS  
Heather Nicole Olguin, BS  
Julie Ann Oliver, BS  
Maribel Oropeza, BA  
Melissa Dawn Pacobit, BS  
Heather Marie Paddy, BS  
Marilyn M. Paige, BS  
Danielle Kristina Pascoe, BS  
Ryan Lynn Patrick, BS  
Alyssa Ann Payne, BS  
Leandra Shay Pearce, BS  
Laura Lee Pearson, BS  
Crystal Anais Perez, BS  
Kimberly Anne Perkins, BS  
Jamie Nicole Pesl, BS  
Elizabeth Danielle Phillips, BS  
Michael Aaron Pittman, BS  
Kyle Lynn Posey, BS  
Brent David Powell, BS  
Kaleigh Anne Powell, BS  
Kelly Suzanne Price, BS

Rosa Linda Ramos, BA  
Orry Charles Randermann, BS  
Micah Breanne Ray, BS  
Cassidy A. Reed, BS  
Michaela Deanna Reese, BS  
Brittany Ann Rekieta, BS  
Bridgette Yvette Resh, BS  
Allison Elizabeth Reynolds, BS  
Jesse Lee Richburg, BS  
Dana Rose Rivera, BS  
Melondy O'Shea Roberson, BS  
Anna Beth Roberts, BS  
Alisha Noel Robertson, BS  
Caitlin Marie Robillard, BS  
Transito Renata Rodarte, BA  
Anna Elena Rodriguez, BS  
Brenda Edith Rodriguez, BA  
Rosalba Salazar Rodriguez, BS  
Sarah Anne Romanowski, BS  
Dawnell Michel Rush, BS  
Erin Alexis Sanders, BS  
Edward Lynn Sansom Jr., BS  
Allison Kaye Schulte, BS  
Lorrie Sue Seibert, BS  
Jo Ann Sepulveda, BS  
Cassidy Diann Sharp, BS  
Brittany Frances Shields, BS  
Ashli Brooke Shreve, BS  
Jennifer Marie Sims, BS  
Chelsea Nicole Slayton, BS  
Paige Nicole Sparks, BS  
Kimberly Michelle Spittler, BS  
Allison Lee Stanton, BS

Candace Marie Stepan, BS  
Chelsea Anne Stephens, BS  
Jessica Ann Stolp, BS  
Elizabeth Ann Stover, BS  
Annamarie Nicole Stuart, BS  
Ana Lara Sudderth, BA  
Vanessa Abigail Swanner, BS  
Katherine Marie Taylor, BS  
Reneir Jurrez Taylor, BS  
Jacob Roy Terrell, BS  
Joanne Theresa Testa, BS  
Lindsey Rhea Thompson, BS  
Krista Renee Thonsgaard, BS  
Candice R. Throckmorton, BS  
Tara Renee Townsend, BS  
Evelyn Trujillo, BA  
Brandi Utley, BS  
Brian Matthew Van Brunt, BS  
Sharon Yvette Vasquez, BS  
Sharlynn Joy Ventura, BS  
Christine Elizabeth Vinal, BS  
James Vo, BS  
Alisa Joanna Vogel, BS  
Stephanie Michelle Wachel, BS  
Denise Elizabeth Walker, BS  
April Lee Wikstrom, BS  
Sarah Brooke Winchester, BS  
Courtney Rae Winkelmann, BS  
LaTanya Lee Winter, BS  
Kahla Rae Wright, BS  
Kay Elizabeth Yell, BS



*Sam Houston purchased the Raven's Nest Golf Club in 2005 to support its PGA/PGM Golf Course Management Program.*

# COLLEGE OF HUMANITIES AND SOCIAL SCIENCES

*Dr. John M. de Castro, Dean*

On behalf of the faculty, staff, and administration of the College of Humanities and Social Sciences, I congratulate you on your achievement.

This is a day that we know you've worked hard for and at times thought would never come. But, you've persevered. Success in life is to some extent determined by inborn ability. Yet, even more important for success is the ability to set goals and not let momentary setbacks or bumps in the road deter you from achieving your goal. Resilience to withstand the frustrations produced by human imperfections, not letting the outside difficulties derail your march toward success, and shaking off setbacks are the cornerstones of a successful life.

Another key to a happy and successful life is to rigorously maintain your personal integrity. Being a consistently honest, moral, and principled person leads to success in every aspect of life. When your word is your bond and what you say is the same as what you believe and what you do, others know that they can trust you. Trust is the foundation of success in all interactions with others, in business, friendship, and relationships. Integrity leads not only to external success but also, and more importantly, to inner happiness and pride. Remember the word inside your class ring that inspired Sam Houston himself, "honor."

We know that your families and friends are very proud of you and likely have played a significant role in supporting you in concrete or emotional ways. Because we understand that nothing is ever achieved alone, we congratulate your family and friends as they share in your success. We also want you to know how proud and happy the faculty, staff, and administration of CHSS are in being part of your success. Educating students for success in their careers as well as their intellectual and personal lives is our mission and the source of tremendous satisfaction for all of us.

It has been said that the mission of a university is the creation of the future. You are the instruments through which we fulfill that promise. By being successful you make us successful. It's difficult to predict your exact future accomplishments. Your careers will take many surprising and unpredictable twists and turns and your actual accomplishments will likely be very different from those that we currently envision. But, I guarantee that this class of 2010 will accomplish great things, that you will become the leaders of the future, and that you will inspire and support the next generation to create their future.



Dr. John M. de Castro, Dean

## *Doctor of Philosophy*

### **Leah Marie Glass**

Dissertation Title: *Grandparent-Grandchild Attachment and Psychosocial Adjustment among Youth from Divorced Families*

Dissertation Committee Chair: Dr. Craig Henderson

### **Yee Lisa Wai Kan**

Dissertation Title: *Change in Alliance as a Mediator in Alcohol Treatments? A Secondary Analysis of Project MATCH*

Dissertation Committee Chair: Dr. Craig Henderson

### **Amber Humphrey Simpler**

Dissertation Title: *Word Memory Test (WMT) Performances of Patients Who Exhibit Behavioral Symptoms of Frontally Mediated Syndromes*

Dissertation Committee Chair: Dr. David V. Nelson



*Governor Rick Perry and SHSU President Gaertner establish the first official Ring Ceremony in 2004.*

### Master Degree Candidates

Kathryn Linda Arthur, MS  
Laura E. Barbarick, MA  
Andrea Velia Bartley, MA  
Bradley W. Braziel, MA  
Blair Elizabeth Brown, MS  
Christina Alice Campbell, MA  
Jennifer Lauren Child, MA  
Sarah Elizabeth Conboy, MPA  
Jason Michael Duncan, MA  
Joan Cromwell Finkes, MA  
Shara Marie Johnson, MA  
Emily Anne Kennedy, MA  
Angela Nicole King, MA  
Lindsay Karlene Mars, MS  
Evgenia S. Marukhnenko, MPA  
Megan Mullen, MS  
Jennifer Lena Ormond, MA  
Aleah Brittney Peterson, MS  
Laura Regan Petitt, MS  
Gavaskar Reid, MA  
Erica Terhune Robinson, MS  
Eva Diane Sorrentino, MS  
Brandon Carl Strubberg, MA  
Gordon E. Tate Jr., MA  
Robert R. Uren, MA  
Michael Jonathan Walls, MA  
Mark Louis Warren, MA  
Amy Leigh Wevodau, MA

### Bachelor Degree Candidates

Niles Jacob Abbott, BA  
Hawa Shuaibu Abdullah, BA  
Mary Beth Adams, BA  
Erica M. Alfaro, BS  
Esmeralda Alfaro, BS  
Elizabeth Anne Alper, BA  
Roberto Matthew Aluizo, BA  
Tiffany Antwanette Amboree, BA  
Garrett Wilson Anderson, BA  
Timothy Andrew Anderson, BA  
Amy Michelle Annese, BS  
Kayla Brooke Ashby, BS  
Melissa Ann Back, BS  
Jamie Lee Baker, BA  
Jessica Hope Baker, BA  
Lindsay Lee Baldrige, BS  
Margaret Lynn Ballard, BA  
Kelli Lynn Barcak, BS  
LaKendra Nicole Bass, BS  
Melanie Amber Bates, BA  
Nancy J. Baxter-Gray, BS  
Yessica Gabriela Betancourt, BA  
Colleen Marie Bialas, BS  
Zann Leeanne Biggs, BS  
Bonnie Lynn Boone, BS  
Heather Kay Bordner, BA



In 2003 the Bearkat Basketball Team made its first appearance at the NCAA Championships.

Emily Elizabeth Borski, BA  
Lauren Alexandria Bottoms, BA  
Elizabeth Ann Bourdeau, BS  
Franchell Nicole Boutte, BS  
Kevin Michael Bowden, BA  
Kasey Rae Boyce, BA  
Christopher Ryan Boyd, BS  
Dwayne Bray Jr., BS  
Blaire Ruth Brown, BS  
Candace Michelle Brown, BA  
Courtney Jean Brown, BA  
Charles M. Bryant, BA  
Mariah Gwendolyn Burnett, BA  
Ryan Joseph Calhoun, BA  
Megan Christine Cantu, BA  
Carolyn Agnes Carroll, BA  
Edmundo Castillo, BS  
William James Castle, BS  
John Alexandru Casu, BA  
Eric Micah Cates, BA  
Courtney Susan Cecil, BA  
Virginia Lopez Cela, BA  
Carmalee D. Chandler, BA  
Lindsay L. Cheek, BS  
Scott Warren Childs, BS  
Kari Rene Chovanec, BS  
Heather Elise Coibion, BA  
Ashleigh Dornnell Conley, BA  
Nathaniel R. Conner, BA  
Sara Jean Cornelius, BS  
Kimberly Michelle Courville, BA  
Laura Giselle Covarrubias, BA  
Laura Kendall Craig, BA  
Michael Scott Crandal, BS  
Jasmine Renee Creeks, BS  
Abby Lee Curtis, BS  
John Regan Daigle, BA  
Safiya Aisha Davenport, BA  
Georgia Andrea Davila, BA  
Kimberly Nicole Davis, BS

Jennifer Lyn Day, BA  
Kristina Mariel Dean, BA  
Rachel M. DeKerlegand, BS  
Curtis Allen Densmore, BA  
Kyle Eldon Deroche, BS  
Nycki Lanelle Dick, BA  
Carrie Lynne Dodd, BS  
Aspen Elizabeth Douglas, BA  
Kelly Samantha Feig, BS  
Nina Christine Ferro, BS  
Leann Claire Fischel, BA  
Chanell Nicole Fisher, BS  
Holle Michelle Fitzpatrick, BA  
Ashley Danielle Focke, BA  
Amber Demaris Ford, BS  
David Robert Frievalt, BS  
Alberto Garcia Jr., BS  
Irma Yvette Garza, BA  
Kristi Dawn Gavranovic, BS  
Aaron S. Gillespie, BS  
Lacey Elizabeth Gilmore, BA  
Meagan Nicole Glass, BS  
Jeffrey Donald Glenn, BA  
Robert L. Goeyns III, BA  
Nokoni Irene Gonzales, BS  
Clarissa Laurel Gonzalez, BA  
Delaine Victoria Graham, BA  
Rachel Louise Greene, BS  
Emmadonna M. Griffin, BS  
Danielle Marie Groccia, BS  
Tiffany Marie Gunn, BA  
Brittany Leigh Hagan, BS  
Johanna Kay Hamilton, BS  
Catherine Claire Hammond, BS  
Lindsay M. Hammond, BS  
Rebecca Renée Hamrick, BS  
Kyle Patrick Hardin, BA  
Stephani Louise Hawthorne, BS  
Kaleigh Elizabeth Hein, BA  
Ryan Alexander Hendon, BS

*College of Humanities and Social Sciences*

Diana R. Hendrix, BS  
Charles M. Henson, BA  
Jennifer Lynn Henson, BS  
Matthew Allen Hill, BS  
Andrea Frances Hilland, BS  
Jessie Tyler Hobson, BA  
Nichole Marie Hoffmann, BS  
Anniqae Maequell Hogan, BS  
Hannah Jennifer Hohl, BS  
LeeAnn Marie Huebner, BS  
Megan Ashley Huff, BS  
Leigha Faye Hughes, BA  
Whitney L. Hughlett, BA  
Loreal Seanté Hunter, BA  
Britney Ann Hyde, BS  
Ashlee Raedawne Isabell, BA  
Generia Jenee Jarrett, BS  
Courtney Annae Jefferson, BS  
Nettie Marie Jelks, BA  
Lynette Irene Joines, BS  
April Leigh Jones, BA  
Jennifer Lynne Kane, BS  
James Brian Kellar, BA  
Jeana Sue Kendrick, BA  
Johanna Marie Kessler, BS  
Crystal Lynn Knighton, BS  
Laura Ann Knott, BA  
Gregory Travis Knowlton, BA  
David Joe Laird, BA  
Lindsay Raechel Lauher, BA  
Douglas Joseph Leopold Jr., BA  
Brian Carey Lewis, BA  
Casey Leanne Lewis, BA  
Matthew Thomas Lindsay, BA  
Sheryl Anne Lobue, BA  
Jaryn Lindsey Lockett, BA  
Carly Ann Loomis, BS  
Leslie D. MacGinnis, BS  
Tristan Marcus Maghett, BS  
Jessica Danielle Maine, BA  
Erik Anthony Malan, BS  
Shannon Michelle Malek, BS  
Rosalinda Marez, BA  
Amanda Leighann Marlow, BS  
Martin DeJesus Martinez Sanchez, BA  
Jason Roy Martino, BA  
Trennece Monaé Matlock, BA  
John Toliver May, BA  
Juliet Ida McCarthy, BS  
Brittany Danielle McClure, BA  
Robert Arthur McDougal, BS  
Vanessa Faye McGowan, BA  
Sharlet Latrice McGowen, BA  
Desiree Trischelle McGowin, BS  
Timothy Kevin McGrath, BS  
Derek Phillip McKearin, BS  
Karen Sarai Mendoza, BA  
Christine Bettie Moldovan, BS  
Benjamin David Monkiewicz, BA  
Janna Marie Morris, BS  
Joshua David Moser, BA  
Kendra Raichell Murphy, BA  
Robert Llewellyn Nelson, BA  
Stephanie Michelle Norris, BA  
Megan Denise Oadra, BS  
Matthew James Offers, BA  
Monica Ortega, BA  
Lauren Helene Oswald, BS  
Daniel Jared Owens, BA  
Talah Jevon Pantallion, BS  
LaDeitra Monique Parker, BA  
Allen Joesph Paul, BA  
Daniel Wayne Pawlowski, BA  
Malissa Lynn Peek, BA  
Jacqueline Guadalupe Pelayo Iniguez, BS  
Misty Dawn Penney, BA  
Charlotte Renée Pennington, BS  
Patrick Matthew Pettibon, BA  
Shelesha Jeannette Pettis, BA  
Arielle Faye Phillips, BA  
Demetrius Jamaill Phillips, BS  
Jennifer Michele Pidatella, BA  
Jerry Jermaine Pollard Jr., BA  
Kristine Amy Pollock, BA  
Carlos Humberto Portillo, BA  
Amy Christine Potter, BA  
Ondrea Charte Pratt, BA  
Amberly Celeste Prescott, BS  
Roberto Alejandro Pulido, BA  
Sarah Amanda Radwan, BS  
Kimberly Dawn Rager, BA  
Liliana Elvira Ramirez, BA  
Bryan Timothy Randolph, BA  
Erika Victoria Rangel, BS  
Ryan M. Rasberry, BA  
Douglas Michael Redlin, BA  
Landon Barton Reed, BA  
Aubrey Kathleen Reynolds, BS  
Lindsey Diane Reynolds, BS  
Amanda Kay Rice, BS  
Cora Leanne Richbourg, BS  
Lauren Elizabeth Rimato, BA  
Heidi Nicole Roark, BS  
Michelle Elise Robinett, BA  
Kathryn Lea Rodgers, BA  
Bridgett Camill Rodriguez, BS  
Cristine Marie Rodriguez, BA  
Idalia B. Rodriguez, BS  
Liliana Rodriguez, BA  
Lisa E. Rodriguez, BS  
Yoana Roman, BA  
Andrew Antonio Ronje, BA  
Angela Marie Rose, BS  
Sarah Virdell Ross, BS  
John Agustin Rudolph, BA  
Cynthia Arlettra Sabbs, BA  
Amber Elizabeth Safarik, BS  
Marisol Salgado, BS  
Amanda Leigh Sanchez, BA  
Broderick Tyrone Sanford Jr., BS  
Kemberli Michelle Sargent, BS  
Jessica Christine Schenck, BA  
Rene' DeeAnn Schunneman, BS  
Anabell Serrano, BS  
Kevin Andrew Sewell, BA  
James Devin Shanley, BA  
Brandy Rachelle Thomas Shannon, BS  
Suzanna Elizabeth Sheldon, BS  
Amanda Marie Short, BA  
Jordan A. Siebold, BS  
Nicole Marie Simmons, BS  
Brittany Michelle Sims, BA  
Megan Rae Sisson, BA  
Nowery John Smith, BA  
William Landis Smith III, BS  
Vanessa Nicole Snook, BS  
Danielle C. Sommerfeld, BA  
Chelsea A. Sparks, BS  
Joycelyn Shannell Sparks, BA  
Christina N. Stanford, BS  
Sarah Beth Stayton, BS  
Matthew Clive Stockton Jr., BA  
Charles Robert Stone, BA  
Joshua Bill Stone, BS  
Amy Lynn Strauss, BS  
Laura Elizabeth Sutton, BA  
Bethany Ann Seale Sznajder, BS  
Vicki Leanne Tate, BS  
April Leigh Terry, BS  
Terry James Thomas Jr., BA  
Jennifer Leigh Tolentino, BS  
Stephanie M. Tracy, BS  
Jeremy Lawrence Trepagnier, BA  
Kendra Veronica Valk, BS  
Kara Louise Vaughan, BA  
Amanda Lee Vela, BS  
Mark H. Wade, BS  
Brittany Lorree Waguespack, BA  
Chase Hanson Walker, BA  
Daniel W. Walker, BS  
Samuel Patrick Walsh, BA  
Jessica Antoinette Ward, BS  
Courtney Yvette Washington, BA  
Tyler Ryan Wendland, BS  
Jennifer Louise Wesley, BS  
Morgan Rhyn West, BS  
Caleb Bishop White, BS  
Jamie S. Wilder, BS  
Andrew Francis Williams, BS  
Andrew Thomas Williams, BA  
Morgan Nicole Williams, BS  
Michael Anthony Wolfskill, BA  
Josh M. Wood, BA  
Derrell Wayne Wright Jr., BA  
Diamondmarquiserachelle Shamice Wynne, BS  
Robertta Zamilpa, BA  
Daniel Martin Zepeda Jr., BA  
Matthew William Ziviski, BS



*Special Thanks*

**CONVOCATIONS  
COMMITTEE**

G. Keith Jenkins, Chair  
Mark Tuttle, Vice Chair  
M. Douglas Berg, Vice Chair

**COLLEGE OF ARTS AND  
SCIENCES**

Doug Kingman  
Tom Seifert  
Dwayne Pavelock  
Rick White  
Joe Muller

**COLLEGE OF BUSINESS  
ADMINISTRATION**

Jonathan Brazeale  
John Miller  
Steven Henry  
Thomas Robertson  
W. Hadley Leavell  
Jeffery Strawser  
Juliana Lily  
Robert Stretcher  
Balasundram Maniam  
Laura Sullivan

**COLLEGE OF CRIMINAL  
JUSTICE**

Jurg Gerber  
Holly Miller  
Hee-Jong Joo  
Mitchel Roth  
Brian Lawton  
Jennifer Schulenberg

**COLLEGE OF EDUCATION**

Betty Higgins  
Melinda Miller  
William V. Hyman  
Gary L. Oden  
Rosanne S. Keathley

**COLLEGE OF HUMANITIES  
AND SOCIAL SCIENCES**

Laura P. Bureson  
William Fleming  
Lee F. Courtney  
Bernadette Pruett  
Caroline Crimm  
Tamara Waggener

**OTHER MEMBERS**

James M. Bankhead  
Shanna House  
Maria Busby  
Kevin W. McKinney  
Edward L. Chatal  
Teresa Ringo  
Kevin Morris  
Mark Shiflet  
Richard F. Eglsaer  
Trevor Thorn  
Douglas J. Greening  
Eugene Young



---

## Office of Alumni Relations

---

The Alumni Association exists to serve and sustain the Sam Houston State University alumni network. Serving the best interests of our members is a top priority, and it is our hope that you find your membership worthy of continuing for years to come. Whether you become a life member or choose to renew your membership each year, you are important to the Alumni Association and the university. A strong university is the result of a strong alumni association. We need your continued support each year to ensure SHSU remains an outstanding public university.

Your ability to connect with your alumni network is your most valuable

SHSU asset- right up there with your SHSU degree. Ultimately, a strong alumni network enhances the value of a SHSU degree. More than 8,000 alumni have already discovered that the best way to stay connected and show their Bearkat pride is to join the alumni association.

In addition to such tangible benefits as the *Heritage Magazine*, *Kat Konnection Newsletter*, lapel pin and the automobile decal, one of the primary benefits of membership is knowing that you are making a difference in the lives of students, faculty and staff here at Sam Houston State University. Each year the association provides financial support for student scholarships.

Take advantage of these benefits of Alumni Association membership:

- Invitations to special events
- Access to Career Services
- Alumni networking
- Alumni publications
- Monthly Sam e-newsletter
- Campus news and updates
- Alumni Savings Connection (check [www.alumni.shsu.edu](http://www.alumni.shsu.edu) for discount listings)
- Regional Alumni Clubs & Special Interest Groups
  - o Austin Club
  - o Austin/Washington County Club
  - o Hispanic Alumni & Friends
  - o Black Alumni & Friends

**To contact the SHSU Alumni Association call 800.283.7478, or online at [www.alumni.shsu.edu](http://www.alumni.shsu.edu)**

**The Alumni Association is your Bearkat connection!**

Sam Houston State University



## Ring Tradition

### THE OFFICIAL RING OF SAM HOUSTON STATE UNIVERSITY

The Official Sam Houston State University Ring has been created as an everlasting symbol of our esteem for the university and our bond with each other. A committee that included students, alumni, faculty and university administration chose the design of the Official Ring in 2003. The committee's goal was to develop a distinctive design that would reflect pride in Sam Houston State University, be easily identifiable, and stand the test of time.

Cast into the inside of the ring is the word "Honor". When Sam Houston joined the U. S. Army in 1813, Elizabeth Houston (Sam Houston's mother) understood her son's decision. She called Sam to her side and handed him a musket saying "never disgrace it: for remember I had rather all my sons should fill one honorable grave, than one of them should turn his back to save his life." She told him to always remember, "while the door to my cottage is open to brave men, it is eternally shut against cowards." Elizabeth Houston placed a small gold band on his finger with a one-word inscription – **HONOR**.

**The next Ring Ceremony is April 7, 2011.** Participants are required to RSVP with the Office of Alumni Relations to reserve their space at least one week prior to the ceremony.

# See Sam Houston... Inspire, Empower, Enrich

For more than 130 years, Sam Houston State University has been preparing students for meaningful lives of achievement. Our motto, "The Measure of a Life is its Service", echoes across the beautiful main campus and beyond. Serving over 17,000 students on one of the most scenic campuses in the nation, in the heart of the majestic Piney Woods of East Texas, Sam Houston State is a great place to fulfill the goals outlined by its motto. Huntsville is a lively community of 40,000 that values education, the arts, history, diversity and culture, bounded by abundant and picturesque forests and a brief drive south to the urban amenities and attractions of The Woodlands and Greater Houston.

SHSU is an accredited and selective institution that offers over 79 bachelor degree programs and over 70 graduate degree programs. The university has been recognized as a Doctoral Research University by the Carnegie Commission on Higher Education. In addition to its 272-acre main campus, SHSU also offers upper level undergraduate courses as well as graduate level courses at the University Center located in The Woodlands. SHSU has developed an award-winning mentoring and advising center known as the SAM Center, which is dedicated to helping students achieve their academic goals.

SHSU has recently celebrated the grand opening of the new James and Nancy Gaertner Performing Arts Center to support its nationally recognized programs in music, dance, and theater. SHSU is home to a fully accredited College of Business Administration, including AACSB, that includes the nation's only complete BBA and MBA programs in banking and financial institutions. SHSU has one of the nation's most comprehensive colleges of Criminal Justice, including an accredited Masters Degree Program in Forensic Sciences. Sam Houston State University is a community of superior scholars, teachers, authors, artists, performers, scientist, mentors and advisers who value student success, collegiality, achievement and service to others.

Come experience a close-knit community focused on a challenging yet supportive educational environment for each and every student. Come See Sam Houston.

Office of Undergraduate Admissions  
admissions@shsu.edu  
(936) 294-1828  
1.866.BEARKAT  
www.shsu.edu/admissions

Office of Graduate Studies  
graduate@shsu.edu  
(936) 294-1971  
www.shsu.edu/graduate

## SPECIFIC AREAS OF ACHIEVEMENT AND RECOGNITION

- Recognized for Student Success and Graduation Rates by the Southern Regional Education Board
- Designed a waste-water treatment system that has been recognized for technology innovation by the Wall Street Journal
- SHSU opened and now operates a Regional Crime Laboratory in The Woodlands
- Counselor Education Doctoral Program received accreditation by the Council for Accreditation of Counseling and Related Educational Programs, making it one of 54 in the nation
- State-of-the-art Performing Art Center named in honor of former President James Gaertner and his wife Nancy
- SHSU First Capital Campaign Exceeds \$61 Million

## Auld Lang Syne

*I*

Should auld acquaintance be forgot,  
And never bro't to mind?  
Should auld acquaintance be forgot,  
And days of auld lang syne?

*Chorus:*

For auld lang syne, my dear,  
For auld lang syne;  
We'll tak' a cup o' kindness yet,  
For auld lang syne.

*II*

And here's a hand, my trusty frien',  
And gie's a hand o' thine;  
We'll tak' a cup o' kindness yet,  
For auld lang syne.

*Chorus:*

For auld lang syne, my dear,  
For auld lang syne;  
We'll tak' a cup o' kindness yet,  
For auld lang syne.

SAM  
★  
ALLS

**Sam Houston**  
STATE UNIVERSITY  
*A Member of The Texas State University System*